



[Go to Product page](#)

Datasheet for ABIN2890557  
**anti-PC antibody (AA 357-406)**

2 Images

Overview

Quantity:	100 µL
Target:	PC
Binding Specificity:	AA 357-406
Reactivity:	Human, Mouse, Rat
Host:	Rabbit
Clonality:	Polyclonal
Conjugate:	This PC antibody is un-conjugated
Application:	Western Blotting (WB), ELISA, Immunohistochemistry (IHC), Immunohistochemistry (Paraffin-embedded Sections) (IHC (p))

Product Details

Immunogen:	Synthetic peptide from human PC (aa357-406). Type of Immunogen: Synthetic peptide
Isotype:	IgG
Specificity:	PC Antibody detects endogenous levels of total PC protein.
Purification:	Immunoaffinity purified

Target Details

Target:	PC
Alternative Name:	PC / Pyruvate Carboxylase ( <a href="#">PC Products</a> )

## Target Details

---

Background:	Name/Gene ID: PC  Synonyms: PC, PCB, Pyruvate carboxylase, Pyruvic carboxylase
Gene ID:	5091
UniProt:	<a href="#">P11498</a>

## Application Details

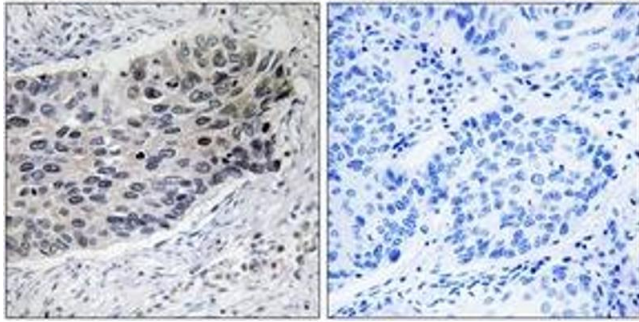
---

Application Notes:	Approved: IHC, IHC-P, Peptide-ELISA (1:40000), WB (1:500 - 1:1000)
Comment:	Target Species of Antibody: Human
Restrictions:	For Research Use only

## Handling

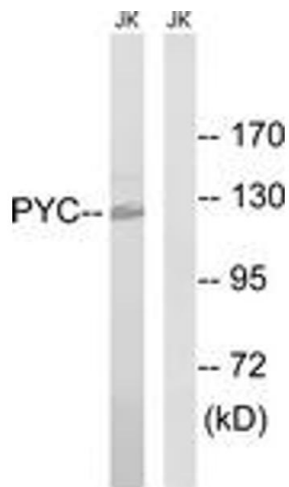
---

Format:	Liquid
Concentration:	Lot specific
Buffer:	PBS (without Mg <sup>2+</sup> , Ca <sup>2+</sup> ), pH 7.4, 150 mM sodium chloride, 0.02 % sodium azide, 50 % glycerol
Preservative:	Sodium azide
Precaution of Use:	This product contains Sodium azide: a POISONOUS AND HAZARDOUS SUBSTANCE which should be handled by trained staff only.
Storage:	-20 °C
Storage Comment:	Store at -20°C for up to 1 year.
Expiry Date:	12 months



### Immunohistochemistry

Image 1.



### Western Blotting

Image 2.