



Datasheet for ABIN2890813
anti-CCZ1 / CGI-43 antibody (AA 411-460)



[Go to Product page](#)

1 Image

Overview

Quantity:	100 µL
Target:	CCZ1 / CGI-43 (CCZ1)
Binding Specificity:	AA 411-460
Reactivity:	Human, Mouse
Host:	Rabbit
Clonality:	Polyclonal
Conjugate:	This CCZ1 / CGI-43 antibody is un-conjugated
Application:	Western Blotting (WB), ELISA

Product Details

Immunogen:	Synthetic peptide from human CG028 (aa411-460). Type of Immunogen: Synthetic peptide
Isotype:	IgG
Specificity:	Antibody detects both C7orf28A and C7orf28B.
Purification:	Immunoaffinity purified

Target Details

Target:	CCZ1 / CGI-43 (CCZ1)
Alternative Name:	CCZ1 / CGI-43 (CCZ1 Products)

Target Details

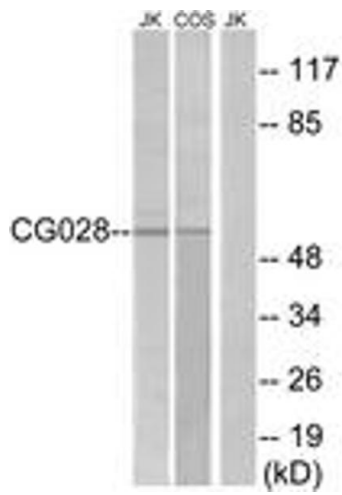
Background:	Name/Gene ID: CCZ1 Synonyms: CCZ1, CCZ1A, CGI-43, C7orf28A, H_NH0577018.2, H_DJ1163J12.2
Gene ID:	51622
UniProt:	O95766

Application Details

Application Notes:	Approved: Peptide-ELISA (1:10000), WB (1:500 - 1:1000)
Comment:	Target Species of Antibody: Human
Restrictions:	For Research Use only

Handling

Format:	Liquid
Concentration:	Lot specific
Buffer:	PBS (without Mg ²⁺ , Ca ²⁺), pH 7.4, 150 mM sodium chloride, 0.02 % sodium azide, 50 % glycerol
Preservative:	Sodium azide
Precaution of Use:	This product contains Sodium azide: a POISONOUS AND HAZARDOUS SUBSTANCE which should be handled by trained staff only.
Storage:	-20 °C
Storage Comment:	Store at -20°C for up to 1 year.
Expiry Date:	12 months



Western Blotting

Image 1.