

Datasheet for ABIN2891120
anti-OR2T5 antibody (AA 66-115)



[Go to Product page](#)

2 Images

Overview

Quantity:	100 µL
Target:	OR2T5
Binding Specificity:	AA 66-115
Reactivity:	Human
Host:	Rabbit
Clonality:	Polyclonal
Conjugate:	This OR2T5 antibody is un-conjugated
Application:	Western Blotting (WB), ELISA, Immunofluorescence (IF)

Product Details

Immunogen:	Synthetic peptide from human OR2T5/2T29 (aa66-115). Type of Immunogen: Synthetic peptide
Isotype:	IgG
Specificity:	OR2T5/2T29 Antibody detects endogenous levels of total OR2T5/2T29 protein.
Purification:	Immunoaffinity purified

Target Details

Target:	OR2T5
Alternative Name:	OR2T5 (OR2T5 Products)

Target Details

Background: Name/Gene ID: OR2T5
Subfamily: Olfactory
Family: GPCR

Synonyms: OR2T5, Olfactory receptor OR1-62, Olfactory receptor 2T5, OR1-62

Gene ID: 401993

UniProt: [Q6IEZ7](#)

Application Details

Application Notes: Approved: IF (1:100 - 1:500), Peptide-ELISA (1:20000), WB (1:500 - 1:1000)

Comment: Target Species of Antibody: Human

Restrictions: For Research Use only

Handling

Format: Liquid

Concentration: Lot specific

Buffer: PBS (without Mg²⁺, Ca²⁺), pH 7.4, 150 mM sodium chloride, 0.02 % sodium azide, 50 % glycerol

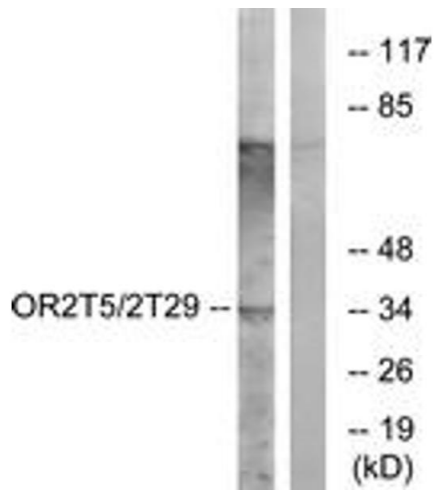
Preservative: Sodium azide

Precaution of Use: This product contains Sodium azide: a POISONOUS AND HAZARDOUS SUBSTANCE which should be handled by trained staff only.

Storage: -20 °C

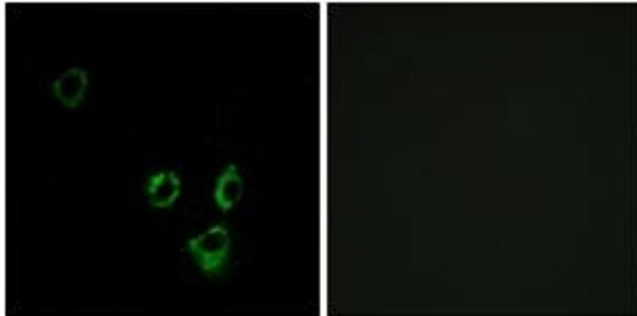
Storage Comment: Store at -20°C for up to 1 year.

Expiry Date: 12 months



Western Blotting

Image 1.



Immunofluorescence

Image 2.