

Datasheet for ABIN2891162
anti-Caspase 1 antibody (Cleaved-Asp210)



[Go to Product page](#)

2 Images

Overview

Quantity:	100 µL
Target:	Caspase 1 (CASP1)
Binding Specificity:	AA 161-210, Cleaved-Asp210
Reactivity:	Human
Host:	Rabbit
Clonality:	Polyclonal
Conjugate:	This Caspase 1 antibody is un-conjugated
Application:	Western Blotting (WB), Immunohistochemistry (IHC), ELISA

Product Details

Immunogen:	Synthetic peptide from human IL-1 beta (aa161-210). Type of Immunogen: Synthetic peptide
Isotype:	IgG
Specificity:	IL-1 beta (Cleaved-Asp210) Antibody detects endogenous levels of fragment of activated IL-1 beta resulting from cleavage adjacent to Asp210.
Purification:	Immunoaffinity purified

Target Details

Target:	Caspase 1 (CASP1)
Alternative Name:	CASP1 / Caspase 1 (CASP1 Products)

Target Details

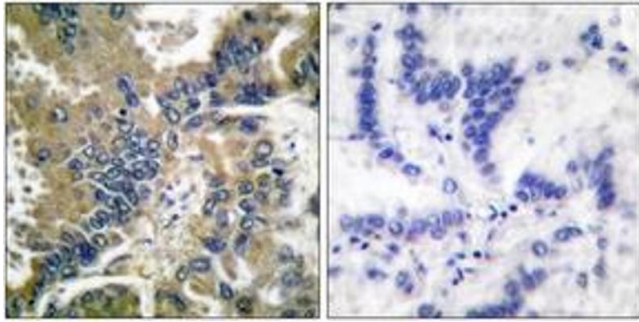
Background:	Name/Gene ID: CASP1 Subfamily: Cysteine C14 Family: Protease Synonyms: CASP1, Caspase-1, CASP-1, CASP1 nirs variant 1, Caspase 1, ICE, ICE-like protease, IL-1 beta-converting enzyme, IL-1BC, IL1BC, IL1BCE, p45, IL1B-convertase, Interleukin-1 beta convertase
Gene ID:	834
UniProt:	P29466
Pathways:	Apoptosis , Interferon-gamma Pathway , Positive Regulation of Endopeptidase Activity , Inflammasome

Application Details

Application Notes:	Approved: IHC (1:50 - 1:100), Peptide-ELISA (1:10000), WB (1:500 - 1:1000) Not recommended for: IHC-P
Comment:	Target Species of Antibody: Human
Restrictions:	For Research Use only

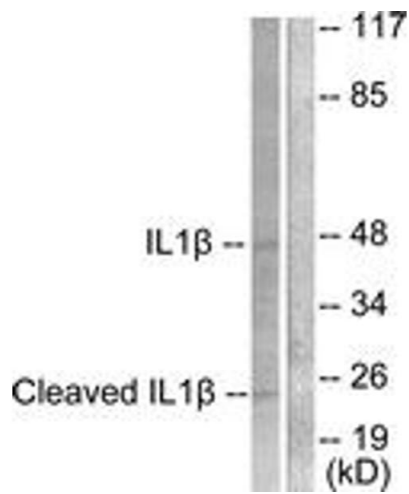
Handling

Format:	Liquid
Concentration:	Lot specific
Buffer:	PBS (without Mg ²⁺ , Ca ²⁺), pH 7.4, 150 mM sodium chloride, 0.02 % sodium azide, 50 % glycerol
Preservative:	Sodium azide
Precaution of Use:	This product contains Sodium azide: a POISONOUS AND HAZARDOUS SUBSTANCE which should be handled by trained staff only.
Storage:	-20 °C
Storage Comment:	Store at -20°C for up to 1 year.
Expiry Date:	12 months



Immunohistochemistry

Image 1.



Western Blotting

Image 2.