

Datasheet for ABIN2902278

anti-Carboxypeptidase G2 antibody (AA 23-415)



[Go to Product page](#)

1 Image

Overview

Quantity:	100 µL
Target:	Carboxypeptidase G2
Binding Specificity:	AA 23-415
Reactivity:	Bacteria
Host:	Rabbit
Clonality:	Polyclonal
Conjugate:	This Carboxypeptidase G2 antibody is un-conjugated
Application:	ELISA, Western Blotting (WB)

Product Details

Immunogen:	Recombinant Pseudomonas sp.Carboxypeptidase G2 protein (23-415AA).
Isotype:	IgG
Purification:	Protein G

Target Details

Target:	Carboxypeptidase G2
Abstract:	Carboxypeptidase G2 Products
UniProt:	P06621

Application Details

Restrictions: For Research Use only

Handling

Format: Liquid

Buffer: 0.01 M PBS, pH 7.4, 0.03 % Proclin-300 and 50 % Glycerol.

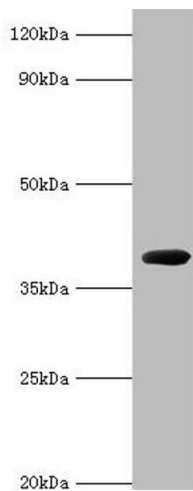
Preservative: ProClin

Precaution of Use: This product contains ProClin: a POISONOUS AND HAZARDOUS SUBSTANCE which should be handled by trained staff only.

Storage: -20 °C,-80 °C

Storage Comment: Aliquot and store at -20 °C or -80 °C. Avoid repeated freeze/thaw cycles.

Images



Western Blotting

Image 1. Western blot analysis of recombinant Carboxypeptidase G2 (0.5 µg) using Carboxypeptidase G2 antibody (2 µg/ml).