

Datasheet for ABIN2904421  
**anti-TNFRSF4 antibody (AA 29-210)**



[Go to Product page](#)

2 Images

## Overview

|                      |   |
|----------------------|---|
| Quantity:            | 100 µL  |
| Target:              | TNFRSF4   |
| Binding Specificity: | AA 29-210   |
| Reactivity:          | Mouse   |
| Host:                | Rabbit  |
| Clonality:           | Polyclonal  |
| Conjugate:           | This TNFRSF4 antibody is un-conjugated  |
| Application:         | Western Blotting (WB), Immunohistochemistry (IHC), Immunoprecipitation (IP),<br>Immunofluorescence (fixed cells) (IF/ICC) |

## Product Details

|               |  |
|---------------|--|
| Immunogen:    | TNFRSF4 (Lys29-Gly210)   |
| Purification: | Antigen-specific affinity chromatography followed by Protein A affinity chromatography |

## Target Details

|                   |   |
|-------------------|---|
| Target:           | TNFRSF4   |
| Alternative Name: | Tumor Necrosis Factor Receptor Superfamily, Member 4 ( <a href="#">TNFRSF4 Products</a> )                       |
| UniProt:          | <a href="#">P47741</a>  |
| Pathways:         | <a href="#">Production of Molecular Mediator of Immune Response</a> , <a href="#">Cancer Immune Checkpoints</a> |

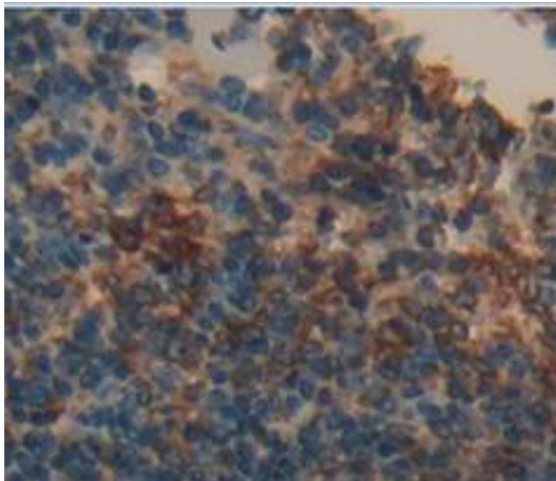
## Application Details

|                    |  |
|--------------------|--|
| Application Notes: | Optimal working dilution should be determined by the investigator. |
| Restrictions:      | For Research Use only  |

## Handling

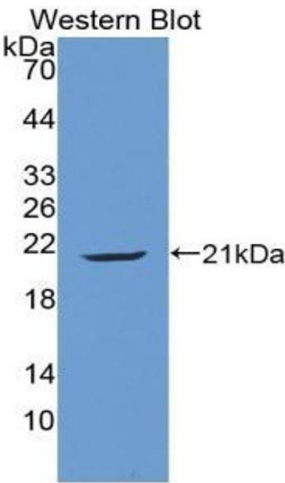
|                    |  |
|--------------------|--|
| Format:            | Liquid   |
| Concentration:     | 500 µg/mL  |
| Buffer:            | PBS, pH 7.4, containing 0.02 % Sodium azide, 50 % glycerol.  |
| Preservative:      | Sodium azide   |
| Precaution of Use: | This product contains Sodium azide: a POISONOUS AND HAZARDOUS SUBSTANCE which should be handled by trained staff only. |
| Storage:           | 4 °C,-20 °C  |
| Storage Comment:   | Store at 4 °C for frequent use. Aliquot and store at -20 °C for one year. Avoid repeated freeze/thaw cycles.           |

## Images



**Immunohistochemistry (Paraffin-embedded Sections)**

**Image 1.** IHC-P analysis of Mouse Tissue, with DAB staining.



Western Blotting

**Image 2.** Western blot analysis of the recombinant protein.