

Datasheet for ABIN290682
anti-SERPINA1 antibody



[Go to Product page](#)

2 Images

Overview

Quantity:	50 µL
Target:	SERPINA1
Reactivity:	Human
Host:	Goat
Clonality:	Polyclonal
Conjugate:	This SERPINA1 antibody is un-conjugated
Application:	Western Blotting (WB), ELISA, Immunohistochemistry (IHC), Immunofluorescence (IF), Immunoprecipitation (IP), Immunohistochemistry (Paraffin-embedded Sections) (IHC (p))

Product Details

Brand:	IHC-plus™
Immunogen:	Purified human SERPINA1 / Alpha-1-Antitrypsin.
Specificity:	A1-Anti-Trypsin [Human Plasma].
Purification:	Purified IgG

Target Details

Target:	SERPINA1
Alternative Name:	SERPINA1 / Alpha 1 Antitrypsin (SERPINA1 Products)
Background:	Name/Gene ID: SERPINA1

Synonyms: SERPINA1, A1A, A1AT, AAT, Alpha 1 Antitrypsin, Alpha-1 protease inhibitor, Alpha-1-

Target Details

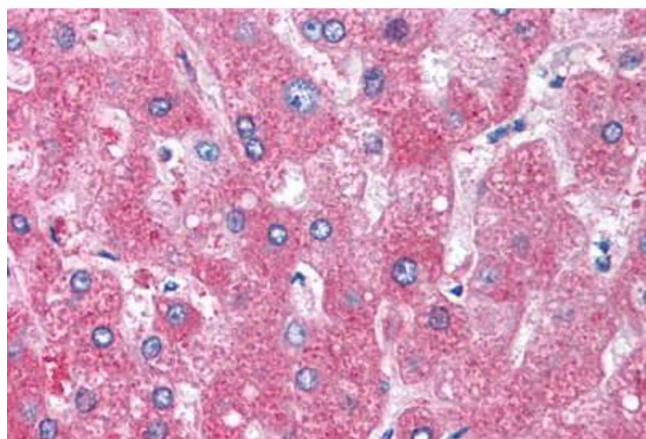
	antiproteinase, Alpha-1-antitrypsin, Alpha1AT, PRO2275, Alpha-1-antitrypsin null, PI1, Serpin A1
Gene ID:	5265
UniProt:	P01009

Application Details

Application Notes:	Approved: ELISA, IF, IHC, IHC-P (5 µg/mL), IP, WB Usage: Immunohistochemistry: This antibody was validated for use in immunohistochemistry on a panel of 21 formalin-fixed, paraffin-embedded (FFPE) human tissues after heat induced antigen retrieval in pH 6.0 citrate buffer. After incubation with the primary antibody, slides were incubated with biotinylated secondary antibody, followed by alkaline phosphatase-streptavidin and chromogen. The stained slides were evaluated by a pathologist to confirm staining specificity. The optimal working concentration for this antibody was determined to be 5 µg/mL.
Comment:	Target Species of Antibody: Human
Restrictions:	For Research Use only

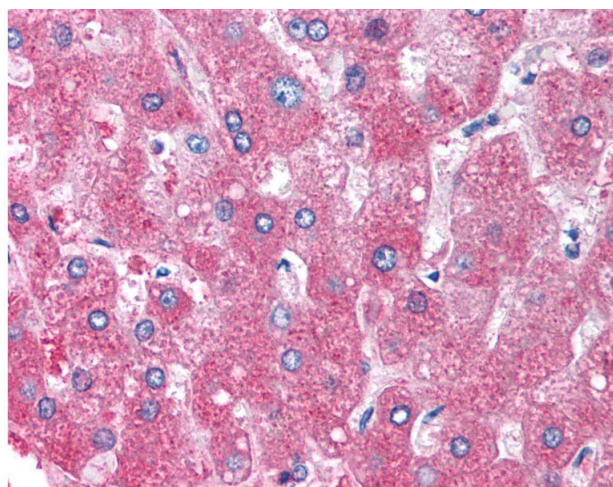
Handling

Format:	Liquid
Concentration:	Lot specific
Buffer:	0.02 M Potassium Phosphate, 0.15 M Sodium Chloride, pH 7.2 with 0.01 % (w/v) Sodium Azide
Preservative:	Sodium azide
Precaution of Use:	This product contains Sodium azide: a POISONOUS AND HAZARDOUS SUBSTANCE which should be handled by trained staff only.
Handling Advice:	Avoid repeated freezing and thawing.
Storage:	4 °C, -20 °C
Storage Comment:	4°C or -20°C, Avoid freeze-thaw cycles.



Immunohistochemistry (Paraffin-embedded Sections)

Image 1. Human Liver (formalin-fixed, paraffin-embedded) stained with SERPINA1 antibody ABIN290682 at 5 ug/ml followed by biotinylated anti-goat IgG secondary antibody ABIN481715, alkaline phosphatase-streptavidin and chromogen.



Immunohistochemistry

Image 2. Anti-Alpha-1-Antitrypsin antibody IHC of human liver. Immunohistochemistry of formalin-fixed, paraffin-embedded tissue after heat-induced antigen retrieval. Antibody concentration 5 ug/ml.