

Datasheet for ABIN2913326

anti-Superoxide dismutase copper chaperone antibody (AA 17-270)[Go to Product page](#)**2** Images

Overview

Quantity:	100 µL
Target:	Superoxide dismutase copper chaperone (CCS)
Binding Specificity:	AA 17-270
Reactivity:	Mouse
Host:	Rabbit
Clonality:	Polyclonal
Conjugate:	This Superoxide dismutase copper chaperone antibody is un-conjugated
Application:	Western Blotting (WB), Immunohistochemistry (IHC), Immunoprecipitation (IP), Immunofluorescence (fixed cells) (IF/ICC)

Product Details

Immunogen:	SOD4 (Ala17-Pro270)
Purification:	Antigen-specific affinity chromatography followed by Protein A affinity chromatography

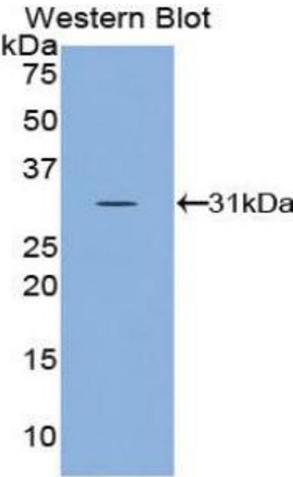
Target Details

Target:	Superoxide dismutase copper chaperone (CCS)
Alternative Name:	Superoxide Dismutase, Copper Chaperone (CCS Products)
Pathways:	Transition Metal Ion Homeostasis

Application Details

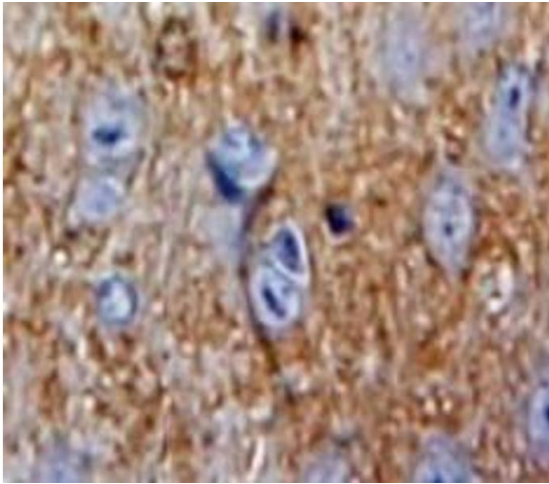
Application Notes:	Optimal working dilution should be determined by the investigator.
Restrictions:	For Research Use only
Handling	
Format:	Liquid
Concentration:	500 µg/mL
Buffer:	PBS, pH 7.4, containing 0.02 % Sodium azide, 50 % glycerol.
Preservative:	Sodium azide
Precaution of Use:	This product contains Sodium azide: a POISONOUS AND HAZARDOUS SUBSTANCE which should be handled by trained staff only.
Storage:	4 °C,-20 °C
Storage Comment:	Store at 4 °C for frequent use. Aliquot and store at -20 °C for one year. Avoid repeated freeze/thaw cycles.

Images



Western Blotting

Image 1. Western blot analysis of the recombinant protein.



Immunohistochemistry (Paraffin-embedded Sections)

Image 2. IHC-P analysis of Brain tissue, with DAB staining.