

Datasheet for ABIN2913332
anti-APLP2 antibody (AA 607-852)



[Go to Product page](#)

2 Images

Overview

Quantity:	100 µL
Target:	APLP2
Binding Specificity:	AA 607-852
Reactivity:	Human
Host:	Rabbit
Clonality:	Polyclonal
Conjugate:	This APLP2 antibody is un-conjugated
Application:	Western Blotting (WB), Immunohistochemistry (IHC), Immunoprecipitation (IP), Immunofluorescence (fixed cells) (IF/ICC)

Product Details

Immunogen:	ST14 (Arg607-Asn852)
Purification:	Antigen-specific affinity chromatography followed by Protein A affinity chromatography

Target Details

Target:	APLP2
Alternative Name:	Suppression Of Tumorigenicity 14 (APLP2 Products)
Pathways:	EGFR Signaling Pathway , Transition Metal Ion Homeostasis , Feeding Behaviour

Application Details

Application Notes: Optimal working dilution should be determined by the investigator.

Restrictions: For Research Use only

Handling

Format: Liquid

Concentration: 500 µg/mL

Buffer: PBS, pH 7.4, containing 0.02 % Sodium azide, 50 % glycerol.

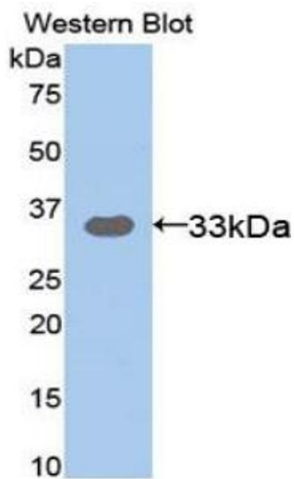
Preservative: Sodium azide

Precaution of Use: This product contains Sodium azide: a POISONOUS AND HAZARDOUS SUBSTANCE which should be handled by trained staff only.

Storage: 4 °C,-20 °C

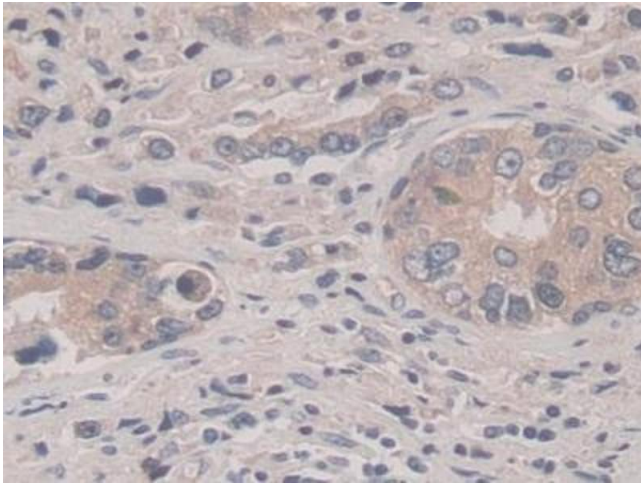
Storage Comment: Store at 4 °C for frequent use. Aliquot and store at -20 °C for one year. Avoid repeated freeze/thaw cycles.

Images



Western Blotting

Image 1. Western blot analysis of the recombinant protein.



Immunohistochemistry (Paraffin-embedded Sections)

Image 2. IHC-P analysis of Human Prostate cancer Tissue, with DAB staining.