

Datasheet for ABIN2913413
anti-SUV420H2/KMT5C antibody[Go to Product page](#)

2 Images

Overview

Quantity:	200 µL
Target:	SUV420H2/KMT5C (SUV420H2)
Reactivity:	Mouse, Human
Host:	Rabbit
Clonality:	Polyclonal
Conjugate:	This SUV420H2/KMT5C antibody is un-conjugated
Application:	Western Blotting (WB), Flow Cytometry (FACS)

Product Details

Immunogen:	Human SUV4-20H2.
Isotype:	IgG
Purification:	This antibody is prepared by Saturated Ammonium Sulfate (SAS) precipitation followed by dialysis against PBS.

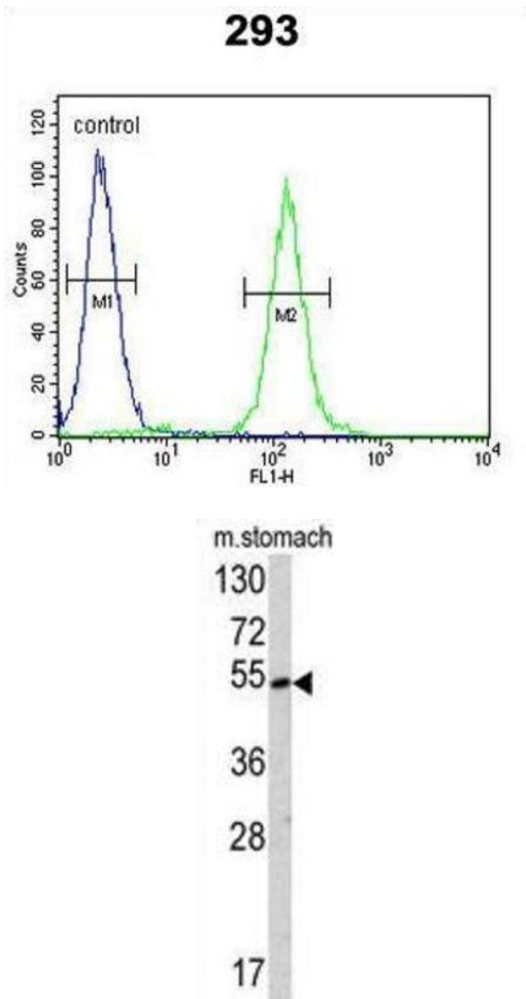
Target Details

Target:	SUV420H2/KMT5C (SUV420H2)
Alternative Name:	SUV4-20H2 (SUV420H2 Products)
UniProt:	Q86Y97

Application Details

Application Notes:	Optimal working dilution should be determined by the investigator.
Restrictions:	For Research Use only
Handling	
Format:	Liquid
Buffer:	PBS with 0.09 % (W/V) sodium azide.
Preservative:	Sodium azide
Precaution of Use:	This product contains Sodium azide: a POISONOUS AND HAZARDOUS SUBSTANCE which should be handled by trained staff only.
Storage:	-20 °C
Storage Comment:	Aliquot and store at -20 °C. Avoid repeated freeze/thaw cycles.

Images



Flow Cytometry

Image 1.

Western Blotting

Image 2.