



Datasheet for ABIN2915318
anti-CCL13 antibody (AA 24-98)



[Go to Product page](#)

2 Images

Overview

Quantity:	100 µL
Target:	CCL13
Binding Specificity:	AA 24-98
Reactivity:	Human
Host:	Rabbit
Clonality:	Polyclonal
Conjugate:	This CCL13 antibody is un-conjugated
Application:	Western Blotting (WB), ELISA, Immunohistochemistry (IHC), Immunofluorescence (fixed cells) (IF/ICC)

Product Details

Immunogen: MCP4 (Gln24-Thr98)

Target Details

Target:	CCL13
Alternative Name:	Monocyte Chemotactic Protein 4 (CCL13 Products)
Pathways:	Regulation of Systemic Arterial Blood Pressure by Hormones , The Global Phosphorylation Landscape of SARS-CoV-2 Infection

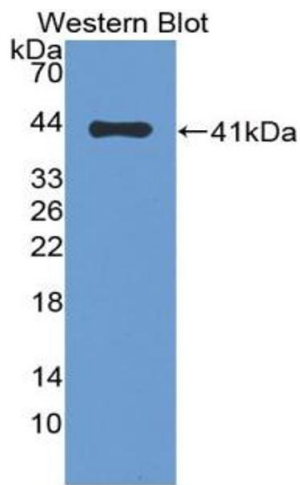
Application Details

Restrictions: For Research Use only

Handling

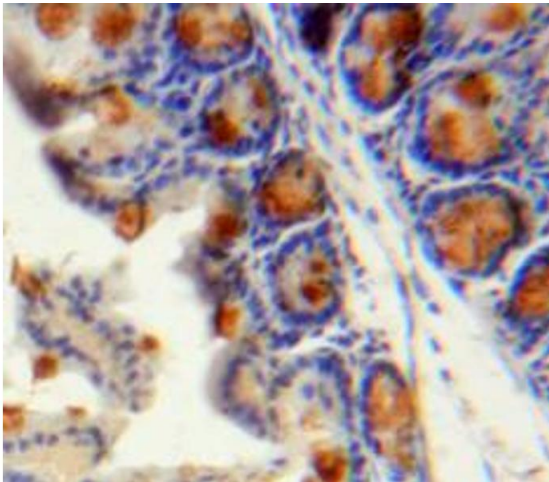
Concentration: 200 µg/mL

Images



Western Blotting

Image 1. Western blot analysis of the recombinant protein.



Immunohistochemistry (Paraffin-embedded Sections)

Image 2. IHC-P analysis of Intestine tissue, with DAB staining.