



[Go to Product page](#)

Datasheet for ABIN291715  
**anti-Orexin antibody (AA 2-14)**

2 Images

Overview

Quantity:	50 µL
Target:	Orexin (OX)
Binding Specificity:	AA 2-14
Reactivity:	Human
Host:	Sheep
Clonality:	Polyclonal
Conjugate:	This Orexin antibody is un-conjugated
Application:	ELISA, Immunohistochemistry (IHC), Immunohistochemistry (Paraffin-embedded Sections) (IHC (p)), Immunohistochemistry (Frozen Sections) (IHC (fro))

Product Details

Brand:	IHC-plus™
Immunogen:	Synthetic peptide, PLPDCCRQKTCSC, corresponding to amino acids 2-14 of human orexin A conjugated to KLH.  Type of Immunogen: Synthetic peptide
Specificity:	Human orexin A, an excitatory neuropeptide linked to alertness and wakefulness in humans.
Purification:	Affinity purified

Target Details

Target:	Orexin (OX)
---------	-------------

## Target Details

---

Alternative Name:	HCRT / Orexin ( <a href="#">OX Products</a> )
Background:	Name/Gene ID: HCRT  Synonyms: HCRT, PPORX, OX, Hypocretin, NRCLP1, Orexin
Gene ID:	3060
UniProt:	<a href="#">O43612</a>
Pathways:	<a href="#">Synaptic Membrane</a> , <a href="#">Feeding Behaviour</a>

## Application Details

---

Application Notes:	Approved: ELISA, IHC, IHC-Fr, IHC-P (10 µg/mL)  Usage: Immunohistochemistry: This antibody was validated for use in immunohistochemistry on a panel of 21 formalin-fixed, paraffin-embedded (FFPE) human tissues after heat induced antigen retrieval in pH 6.0 citrate buffer. After incubation with the primary antibody, slides were incubated with biotinylated secondary antibody, followed by alkaline phosphatase-streptavidin and chromogen. The stained slides were evaluated by a pathologist to confirm staining specificity. The optimal working concentration for this antibody was determined to be 10 mg/mL. Histology Positive Control Tissue: Hypothalamus.
Comment:	Target Species of Antibody: Human
Restrictions:	For Research Use only

## Handling

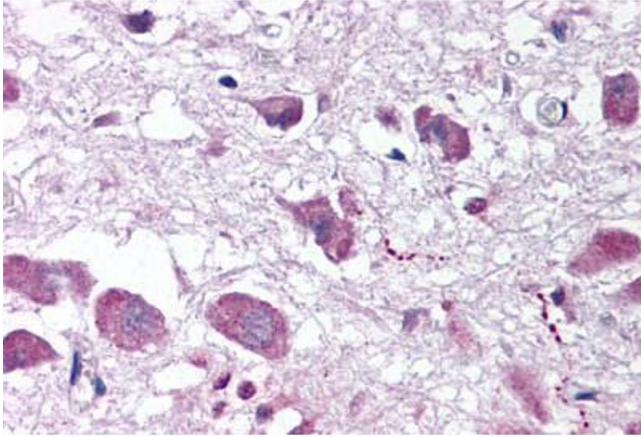
---

Format:	Liquid
Concentration:	Lot specific
Buffer:	PBS, pH 7.2, 0.09 % sodium azide.
Preservative:	Sodium azide
Precaution of Use:	This product contains Sodium azide: a POISONOUS AND HAZARDOUS SUBSTANCE which should be handled by trained staff only.
Handling Advice:	Avoid repeated freezing and thawing.
Storage:	4 °C, -20 °C

## Handling

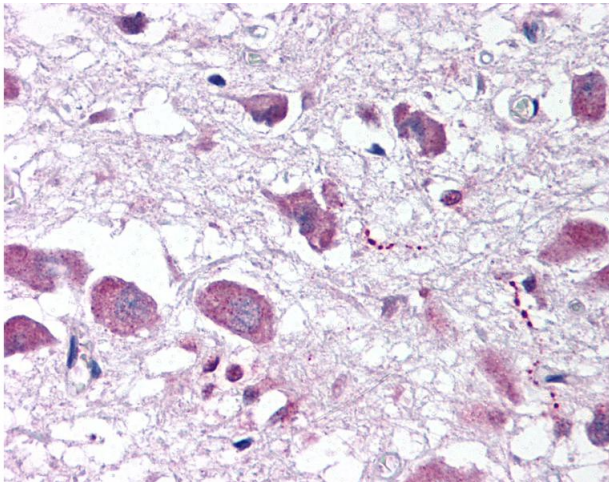
Storage Comment: 4°C or -20°C, Avoid freeze-thaw cycles.

## Images



### Immunohistochemistry (Paraffin-embedded Sections)

**Image 1.** Human Brain, Hypothalamus (formalin-fixed, paraffin-embedded) stained with HCRT antibody ABIN291715 at 10 mg/ml followed by biotinylated secondary antibody, alkaline phosphatase-streptavidin and chromogen.



### Immunohistochemistry

**Image 2.** Anti-HCRT / Orexin antibody IHC of human brain, hypothalamus. Immunohistochemistry of formalin-fixed, paraffin-embedded tissue after heat-induced antigen retrieval. Antibody concentration 10 ug/ml.