



[Go to Product page](#)

Datasheet for ABIN2920486
anti-Plastin 3 antibody (AA 234-475)

2 Images

Overview

Quantity:	100 µL
Target:	Plastin 3 (PLS3)
Binding Specificity:	AA 234-475
Reactivity:	Human
Host:	Rabbit
Clonality:	Polyclonal
Conjugate:	This Plastin 3 antibody is un-conjugated
Application:	Western Blotting (WB), Immunohistochemistry (IHC), Immunoprecipitation (IP), Immunofluorescence (fixed cells) (IF/ICC)

Product Details

Immunogen:	PLS3 (Ile234-Lys475)
Purification:	Antigen-specific affinity chromatography followed by Protein A affinity chromatography

Target Details

Target:	Plastin 3 (PLS3)
Alternative Name:	Plastin 3 (PLS3 Products)

Application Details

Application Notes:	Optimal working dilution should be determined by the investigator.
--------------------	--

Application Details

Restrictions: For Research Use only

Handling

Format: Liquid

Concentration: 500 µg/mL

Buffer: PBS, pH 7.4, containing 0.01 % SKL, 1 mM DTT, 5 % Trehalose and Proclin300.

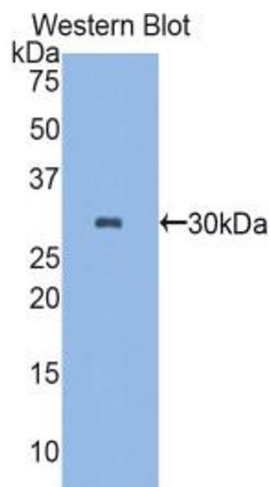
Preservative: Dithiothreitol (DTT), ProClin

Precaution of Use: This product contains ProClin and Dithiothreitol (DTT): POISONOUS AND HAZARDOUS SUBSTANCES which should be handled by trained staff only.

Storage: 4 °C, -20 °C

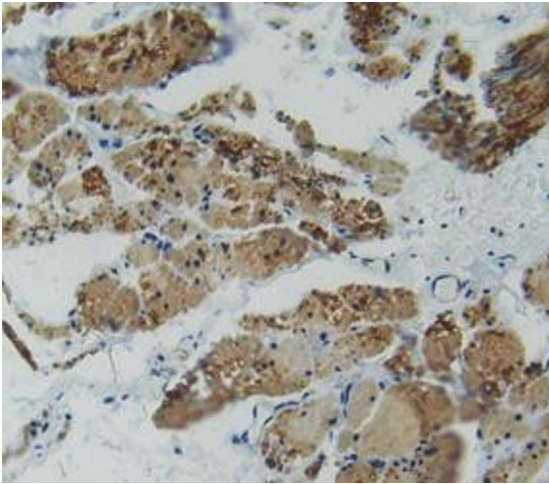
Storage Comment: Store at 4 °C for frequent use. Aliquot and store at -20 °C for one year. Avoid repeated freeze/thaw cycles.

Images



Western Blotting

Image 1. Western blot analysis of the recombinant protein.



Immunohistochemistry (Paraffin-embedded Sections)

Image 2. IHC-P analysis of rectum tissue, with DAB staining.