

Datasheet for ABIN2921364
anti-PAPPA antibody (AA 1270-1558)



[Go to Product page](#)

2 Images

Overview

Quantity:	100 µL
Target:	PAPPA
Binding Specificity:	AA 1270-1558
Reactivity:	Human
Host:	Rabbit
Clonality:	Polyclonal
Conjugate:	This PAPPA antibody is un-conjugated
Application:	Western Blotting (WB), Immunoprecipitation (IP), Immunohistochemistry (IHC), Immunofluorescence (fixed cells) (IF/ICC)

Product Details

Immunogen:	PAPPA (Thr1270-Cys1558)
Purification:	Antigen-specific affinity chromatography followed by Protein A affinity chromatography

Target Details

Target:	PAPPA
Alternative Name:	Pregnancy Associated Plasma Protein A (PAPPA Products)
UniProt:	Q13219

Application Details

Application Notes: Optimal working dilution should be determined by the investigator.

Restrictions: For Research Use only

Handling

Format: Liquid

Concentration: 500 µg/mL

Buffer: PBS, pH 7.4, containing 0.02 % Sodium azide, 50 % glycerol.

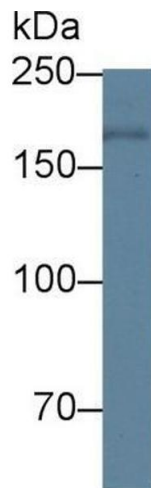
Preservative: Sodium azide

Precaution of Use: This product contains Sodium azide: a POISONOUS AND HAZARDOUS SUBSTANCE which should be handled by trained staff only.

Storage: 4 °C,-20 °C

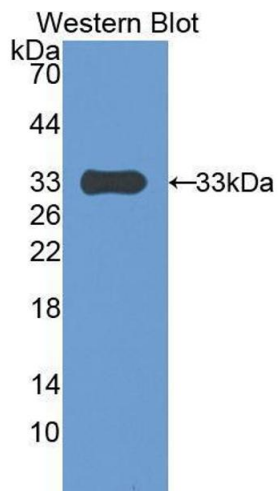
Storage Comment: Store at 4 °C for frequent use. Aliquot and store at -20 °C for one year. Avoid repeated freeze/thaw cycles.

Images



Western Blotting

Image 1. Western blot analysis of Human Placenta lysate, using Human PAPP-A Antibody (1 µg/ml) and HRP-conjugated Goat Anti-Rabbit antibody (



Western Blotting

Image 2. Western blot analysis of the recombinant protein.