

Datasheet for ABIN2921662
anti-PD-L1 antibody (AA 34-241)



[Go to Product page](#)

4 Images

Overview

Quantity:	100 µL
Target:	PD-L1
Binding Specificity:	AA 34-241
Reactivity:	Mouse
Host:	Rabbit
Clonality:	Polyclonal
Conjugate:	This PD-L1 antibody is un-conjugated
Application:	Western Blotting (WB), Immunohistochemistry (IHC), Immunoprecipitation (IP), Immunofluorescence (fixed cells) (IF/ICC)

Product Details

Immunogen:	PDCD1LG1 (Ser34-Val241)
Purification:	Antigen-specific affinity chromatography followed by Protein A affinity chromatography

Target Details

Target:	PD-L1
Alternative Name:	Programmed Cell Death Protein 1 Ligand 1 (PD-L1 Products)
UniProt:	Q9EP73
Pathways:	Cancer Immune Checkpoints

Application Details

Application Notes: Optimal working dilution should be determined by the investigator.

Restrictions: For Research Use only

Handling

Format: Liquid

Concentration: 500 µg/mL

Buffer: PBS, pH 7.4, containing 0.02 % Sodium azide, 50 % glycerol.

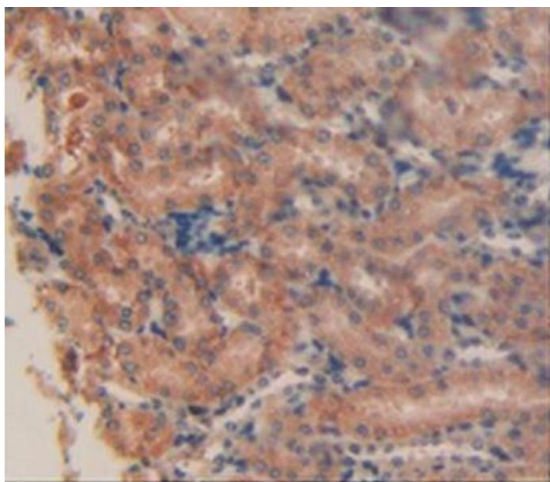
Preservative: Sodium azide

Precaution of Use: This product contains Sodium azide: a POISONOUS AND HAZARDOUS SUBSTANCE which should be handled by trained staff only.

Storage: 4 °C, -20 °C

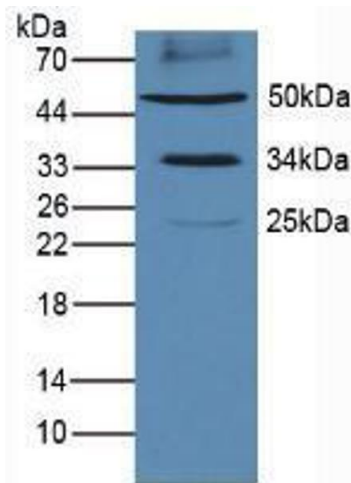
Storage Comment: Store at 4 °C for frequent use. Aliquot and store at -20 °C for one year. Avoid repeated freeze/thaw cycles.

Images



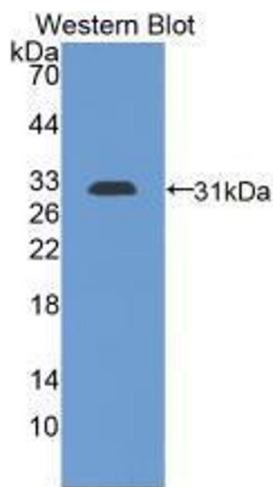
Immunohistochemistry (Paraffin-embedded Sections)

Image 1. IHC-P analysis of Mouse Kidney Tissue, with DAB staining.



Western Blotting

Image 2. Western blot analysis of Mouse Heart Tissue.



Western Blotting

Image 3. Western blot analysis of the recombinant protein.

Please check the [product details page](#) for more images. Overall 4 images are available for ABIN2921662.