



[Go to Product page](#)

Datasheet for ABIN2922040

## anti-PPH-3 antibody (Regulatory Subunit 1)

### 4 Images

#### Overview

Quantity:	100 µL
Target:	PPH-3
Binding Specificity:	AA 2-170, Regulatory Subunit 1
Reactivity:	Human
Host:	Rabbit
Clonality:	Polyclonal
Conjugate:	This PPH-3 antibody is un-conjugated
Application:	Western Blotting (WB), Immunofluorescence (fixed cells) (IF/ICC), Immunohistochemistry (IHC), Immunoprecipitation (IP)

#### Product Details

Immunogen:	PPP3R1 (Gly2-Val170)
Purification:	Antigen-specific affinity chromatography followed by Protein A affinity chromatography

#### Target Details

Target:	PPH-3
Alternative Name:	Protein Phosphatase 3 ( <a href="#">PPH-3 Products</a> )

#### Application Details

Application Notes:	Optimal working dilution should be determined by the investigator.
--------------------	--

## Application Details

Restrictions: For Research Use only

## Handling

Format: Liquid

Concentration: 500 µg/mL

Buffer: 0.01M PBS, pH 7.4, containing 0.05 % Proclin-300, 50 % glycerol.

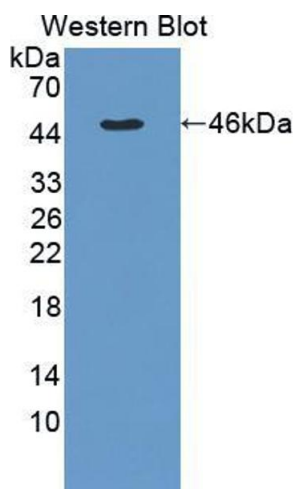
Preservative: ProClin

Precaution of Use: This product contains ProClin: a POISONOUS AND HAZARDOUS SUBSTANCE which should be handled by trained staff only.

Storage: 4 °C, -20 °C

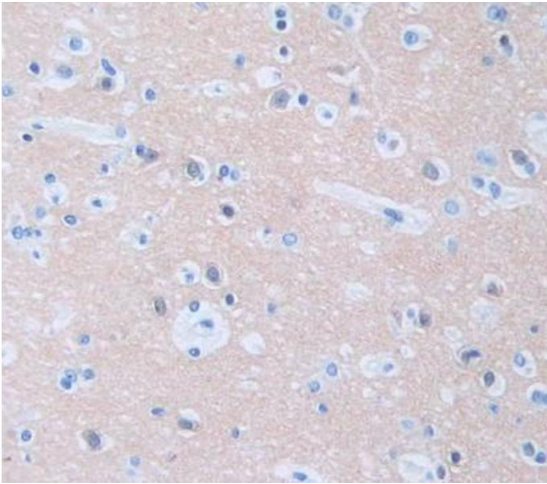
Storage Comment: Store at 4 °C for frequent use. Aliquot and store at -20 °C for one year. Avoid repeated freeze/thaw cycles.

## Images



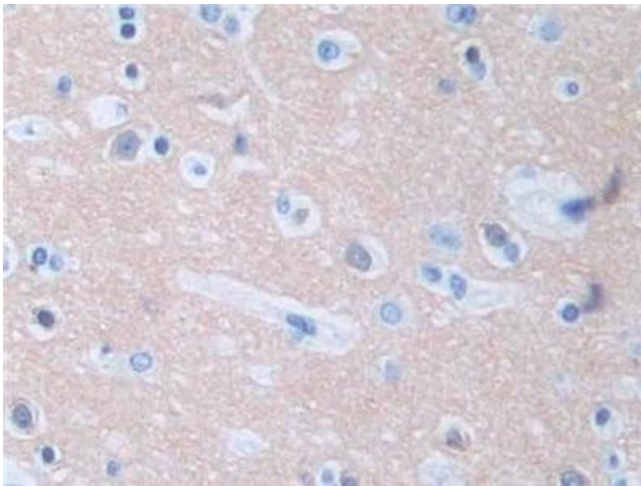
### Western Blotting

**Image 1.** Western blot analysis of recombinant Human PPP3R1.



**Immunohistochemistry (Paraffin-embedded Sections)**

**Image 2.** IHC-P analysis of Kidney tissue, with DAB staining.



**Immunohistochemistry (Paraffin-embedded Sections)**

**Image 3.** IHC-P analysis of Human Cerebrum Tissue, with DAB staining.

Please check the [product details page](#) for more images. Overall 4 images are available for ABIN2922040.