

Datasheet for ABIN2924101  
**anti-Ribonuclease A8 antibody (AA 19-154)**[Go to Product page](#)

## 3 Images

## Overview

Quantity:	100 µL
Target:	Ribonuclease A8
Binding Specificity:	AA 19-154
Reactivity:	Human
Host:	Rabbit
Clonality:	Polyclonal
Conjugate:	This Ribonuclease A8 antibody is un-conjugated
Application:	Immunofluorescence (fixed cells) (IF/ICC), Immunohistochemistry (IHC), Western Blotting (WB), Immunoprecipitation (IP)

## Product Details

Immunogen:	RNASE8 (Trp19-Val154)
Purification:	Antigen-specific affinity chromatography followed by Protein A affinity chromatography

## Target Details

Target:	Ribonuclease A8
Abstract:	<a href="#">Ribonuclease A8 Products</a>
UniProt:	<a href="#">Q8TDE3</a>

## Application Details

Application Notes: Optimal working dilution should be determined by the investigator.

Restrictions: For Research Use only

## Handling

Format: Liquid

Concentration: 500 µg/mL

Buffer: PBS, pH 7.4, containing 0.02 % Sodium azide, 50 % glycerol.

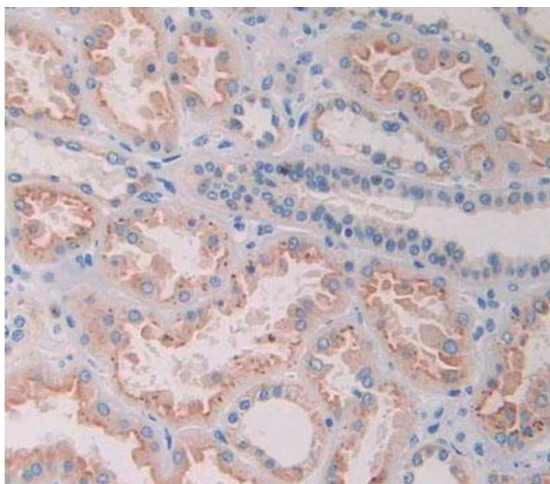
Preservative: Sodium azide

Precaution of Use: This product contains Sodium azide: a POISONOUS AND HAZARDOUS SUBSTANCE which should be handled by trained staff only.

Storage: 4 °C, -20 °C

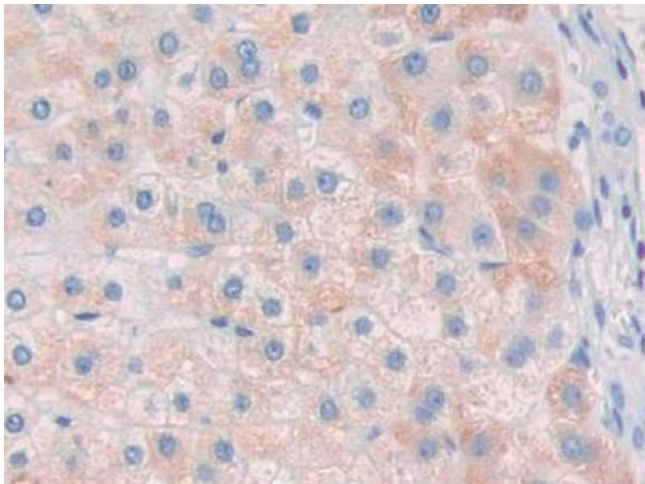
Storage Comment: Store at 4 °C for frequent use. Aliquot and store at -20 °C for one year. Avoid repeated freeze/thaw cycles.

## Images



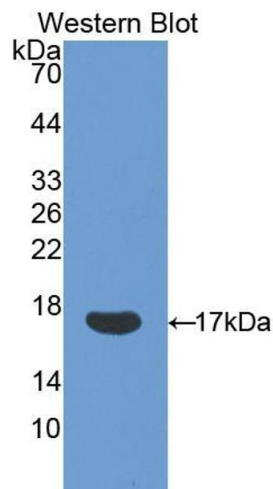
### Immunohistochemistry (Paraffin-embedded Sections)

**Image 1.** IHC-P analysis of kidney tissue, with DAB staining.



Immunohistochemistry (Paraffin-embedded Sections)

**Image 2.** IHC-P analysis of Human Liver cancer Tissue, with DAB staining.



Western Blotting

**Image 3.** Western blot analysis of the recombinant protein.