

Datasheet for ABIN292449

**anti-Renin antibody****2** Images[Go to Product page](#)

## Overview

Quantity:	50 µg
Target:	Renin (REN)
Reactivity:	Human
Host:	Sheep
Clonality:	Polyclonal
Conjugate:	This Renin antibody is un-conjugated
Application:	Western Blotting (WB), ELISA, Immunohistochemistry (IHC), Immunohistochemistry (Paraffin-embedded Sections) (IHC (p))

## Product Details

Brand:	IHC-plus™
Immunogen:	Recombinant full length wild-type human renin (Glycosylated). Type of Immunogen: Recombinant protein
Specificity:	Human renin
Purification:	Protein G purified

## Target Details

Target:	Renin (REN)
Alternative Name:	REN / Renin 1 ( <a href="#">REN Products</a> )
Background:	Name/Gene ID: REN

## Target Details

Subfamily: Aspartic A1

Family: Protease

Synonyms: REN, Angiotensin-forming enzyme, Angiotensinogenase, HNFJ2, RENAA, Renin precursor, renal, Renin

Gene ID: 5972

Pathways: [ACE Inhibitor Pathway](#), [Peptide Hormone Metabolism](#), [Regulation of Systemic Arterial Blood Pressure by Hormones](#), [Feeding Behaviour](#)

## Application Details

Application Notes: Approved: ELISA, IHC, IHC-P (2.5 µg/mL), WB

Usage: Immunohistochemistry: This antibody was validated for use in immunohistochemistry on a panel of 21 formalin-fixed, paraffin-embedded (FFPE) human tissues after heat induced antigen retrieval in pH 6.0 citrate buffer. After incubation with the primary antibody, slides were incubated with biotinylated secondary antibody, followed by alkaline phosphatase-streptavidin and chromogen. The stained slides were evaluated by a pathologist to confirm staining specificity. The optimal working concentration for this antibody was determined to be 2.5 µg/mL.

Comment: Target Species of Antibody: Human

Restrictions: For Research Use only

## Handling

Format: Liquid

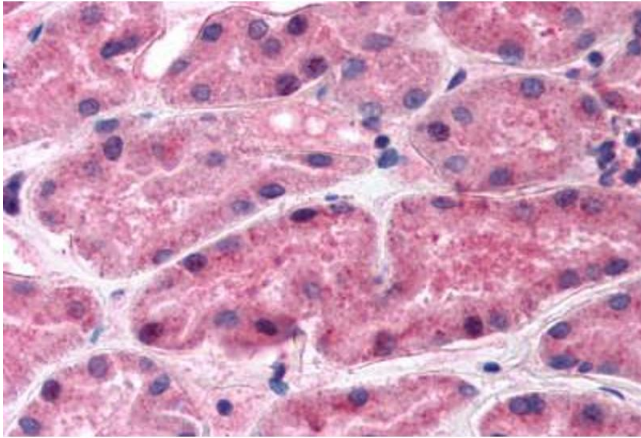
Concentration: Lot specific

Buffer: 0.05 M sodium phosphate, 0.1 M sodium chloride, 1 mM EDTA, pH 6.6.

Handling Advice: Avoid freeze/thaw cycles.

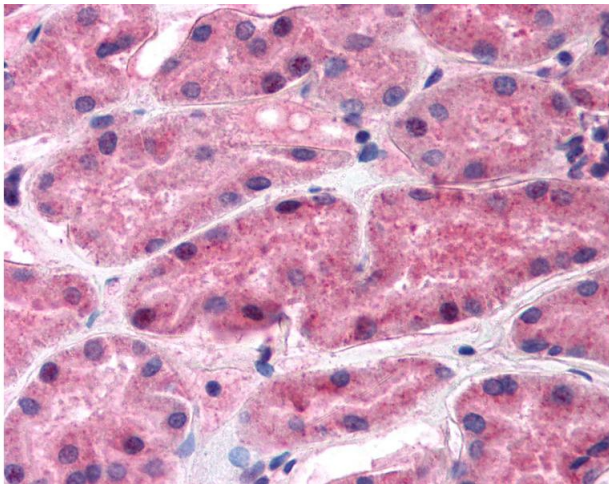
Storage: -80 °C

Storage Comment: Store at -70°C, avoid freeze/thaw cycles.



#### Immunohistochemistry (Paraffin-embedded Sections)

**Image 1.** Human Kidney (formalin-fixed, paraffin-embedded) stained with REN antibody ABIN292449 at 2.5 ug/ml followed by biotinylated secondary antibody, alkaline phosphatase-streptavidin and chromogen.



#### Immunohistochemistry

**Image 2.** Anti-REN / Renin antibody IHC of human kidney. Immunohistochemistry of formalin-fixed, paraffin-embedded tissue after heat-induced antigen retrieval. Antibody concentration 5 ug/ml.