



[Go to Product page](#)

Datasheet for ABIN292561  
**anti-NOV antibody (C-Term)**

2 Images

Overview

Quantity:	50 µg
Target:	NOV
Binding Specificity:	C-Term
Reactivity:	Human
Host:	Rabbit
Clonality:	Polyclonal
Conjugate:	This NOV antibody is un-conjugated
Application:	Western Blotting (WB), ELISA, Immunohistochemistry (IHC), Immunohistochemistry (Paraffin-embedded Sections) (IHC (p))

Product Details

Brand:	IHC-plus™
Immunogen:	Synthetic peptide from human NOV / CCN3. Type of Immunogen: Synthetic peptide
Specificity:	Synthetic peptide corresponding to C-terminal residues of human NOV protein homolog precursor (NovH) (Nephroblastoma overexpressed gene protein homolog)
Purification:	Immunoaffinity purified

Target Details

Target:	NOV
---------	-----

## Target Details

---

Alternative Name:	CCN3 / NOV ( <a href="#">NOV Products</a> )
Background:	Name/Gene ID: NOV  Synonyms: NOV, CCN3, CCN family member 3, IGFBP9, IBP-9, IGFBP-9, NOVh, IGF-binding protein 9, Nephroblastoma overexpressed, Protein NOV homolog
Gene ID:	4856
UniProt:	<a href="#">P48745</a>
Pathways:	<a href="#">Smooth Muscle Cell Migration</a> , <a href="#">Growth Factor Binding</a>

## Application Details

---

Application Notes:	Approved: ELISA (1 µg/mL), IHC, IHC-P (10 µg/mL), WB (1 µg/mL)  Usage: Immunohistochemistry: This antibody was validated for use in immunohistochemistry on a panel of 21 formalin-fixed, paraffin-embedded (FFPE) human tissues after heat induced antigen retrieval in pH 6.0 citrate buffer. After incubation with the primary antibody, slides were incubated with biotinylated secondary antibody, followed by alkaline phosphatase-streptavidin and chromogen. The stained slides were evaluated by a pathologist to confirm staining specificity. The optimal working concentration for this antibody was determined to be 10 µg/mL.
Comment:	Target Species of Antibody: Human
Restrictions:	For Research Use only

## Handling

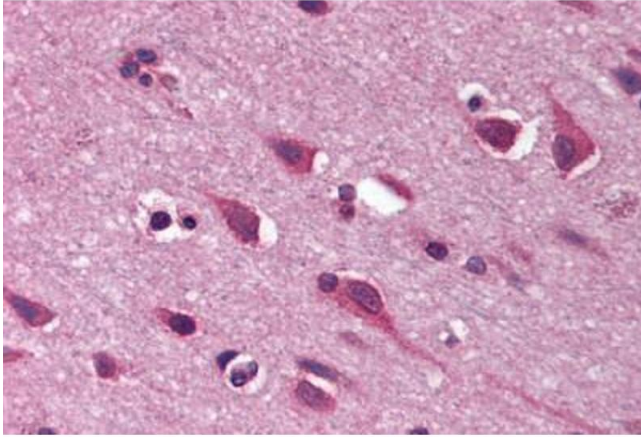
---

Format:	Liquid
Concentration:	Lot specific
Buffer:	PBS, 0.01 % sodium azide, 50 % glycerol.
Preservative:	Sodium azide
Precaution of Use:	This product contains Sodium azide: a POISONOUS AND HAZARDOUS SUBSTANCE which should be handled by trained staff only.
Handling Advice:	Avoid repeated freezing and thawing.
Storage:	4 °C, -20 °C

## Handling

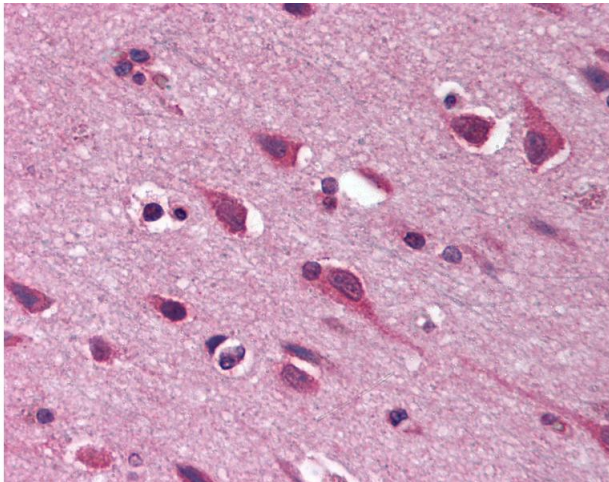
Storage Comment: 4°C or -20°C, Avoid freeze-thaw cycles.

## Images



### Immunohistochemistry (Paraffin-embedded Sections)

**Image 1.** Human Brain, Cortex (formalin-fixed, paraffin-embedded) stained with NOV antibody ABIN292561 at 10 ug/ml followed by biotinylated goat anti-rabbit IgG secondary antibody ABIN481713, alkaline phosphatase-streptavidin and chromogen.



### Immunohistochemistry

**Image 2.** Anti-NOV / CCN3 antibody IHC of human brain, cortex. Immunohistochemistry of formalin-fixed, paraffin-embedded tissue after heat-induced antigen retrieval. Antibody concentration 10 ug/ml.