



[Go to Product page](#)

Datasheet for ABIN2927510
anti-Elastin antibody (AA 266-443)

2 Images

Overview

Quantity:	100 µL
Target:	Elastin (ELN)
Binding Specificity:	AA 266-443
Reactivity:	Mouse
Host:	Rabbit
Clonality:	Polyclonal
Conjugate:	This Elastin antibody is un-conjugated
Application:	Western Blotting (WB), Immunohistochemistry (IHC), Immunoprecipitation (IP), Immunofluorescence (fixed cells) (IF/ICC)

Product Details

Immunogen:	ELN (Pro266-Gly443)
Purification:	Antigen-specific affinity chromatography followed by Protein A affinity chromatography

Target Details

Target:	Elastin (ELN)
Alternative Name:	Elastin (ELN Products)
UniProt:	P54320
Pathways:	Regulation of Actin Filament Polymerization

Application Details

Application Notes: Optimal working dilution should be determined by the investigator.

Restrictions: For Research Use only

Handling

Format: Liquid

Concentration: 500 µg/mL

Buffer: 0.01M PBS, pH 7.4, containing 0.05 % Proclin-300, 50 % glycerol.

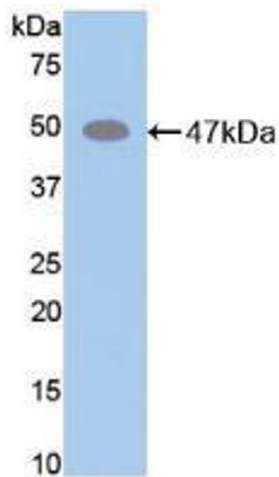
Preservative: ProClin

Precaution of Use: This product contains ProClin: a POISONOUS AND HAZARDOUS SUBSTANCE which should be handled by trained staff only.

Storage: 4 °C,-20 °C

Storage Comment: Store at 4 °C for frequent use. Aliquot and store at -20 °C for one year. Avoid repeated freeze/thaw cycles.

Images



Western Blotting

Image 1. Western blot analysis of recombinant Mouse ELN.



Western Blotting

Image 2. Western blot analysis of Mouse Liver Lysate, using anti-Mouse ELN Antibody (1 $\mu\text{g/ml}$) and HRP-conjugated Goat Anti-Rabbit antibody (abx400043, 0.2 $\mu\text{g/ml}$).