



[Go to Product page](#)

Datasheet for ABIN2928679
anti-FAM132A antibody (AA 92-241)

3 Images

Overview

Quantity:	100 µL
Target:	FAM132A
Binding Specificity:	AA 92-241
Reactivity:	Human
Host:	Rabbit
Clonality:	Polyclonal
Conjugate:	This FAM132A antibody is un-conjugated
Application:	Western Blotting (WB), Immunohistochemistry (IHC), Immunofluorescence (fixed cells) (IF/ICC), Immunoprecipitation (IP)

Product Details

Immunogen:	FAM132A (Gly92-Gln241)
Purification:	Antigen-specific affinity chromatography followed by Protein A affinity chromatography

Target Details

Target:	FAM132A
Alternative Name:	Family With Sequence Similarity 132, Member A (FAM132A Products)
UniProt:	Q5T7M4

Application Details

Application Notes: Optimal working dilution should be determined by the investigator.

Restrictions: For Research Use only

Handling

Format: Liquid

Concentration: 500 µg/mL

Buffer: PBS, pH 7.4, containing 0.02 % Sodium azide, 50 % glycerol.

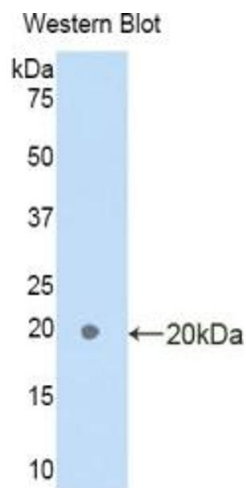
Preservative: Sodium azide

Precaution of Use: This product contains Sodium azide: a POISONOUS AND HAZARDOUS SUBSTANCE which should be handled by trained staff only.

Storage: 4 °C, -20 °C

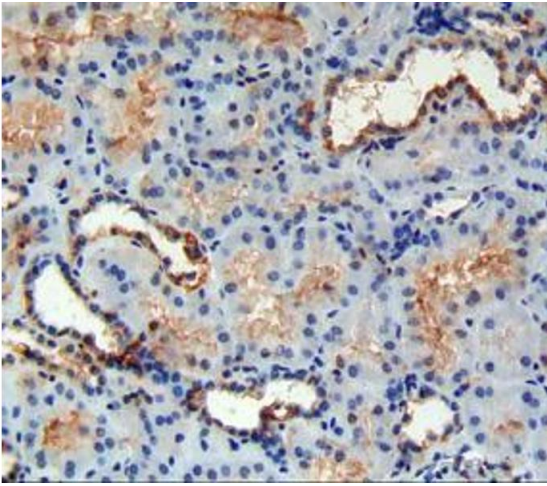
Storage Comment: Store at 4 °C for frequent use. Aliquot and store at -20 °C for one year. Avoid repeated freeze/thaw cycles.

Images



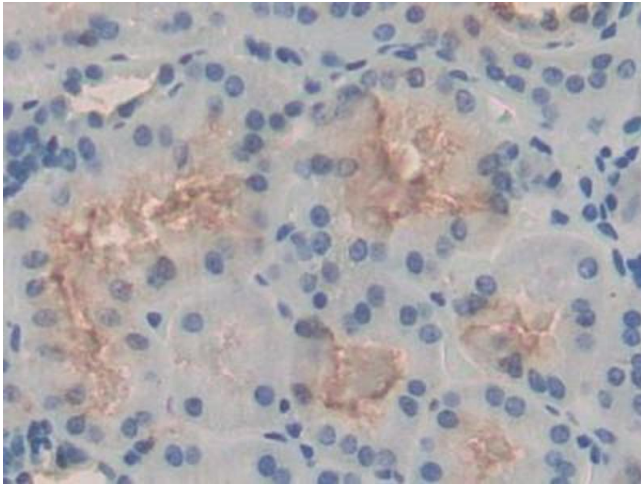
Western Blotting

Image 1. Western blot analysis of the recombinant protein.



Immunohistochemistry (Paraffin-embedded Sections)

Image 2. IHC-P analysis of kidney tissue, with DAB staining.



Immunohistochemistry (Paraffin-embedded Sections)

Image 3. IHC-P analysis of Human Kidney Tissue, with DAB staining.