

Datasheet for ABIN292915

anti-beta-2 Microglobulin antibody[Go to Product page](#)**2** Images

Overview

Quantity:	0.1 mg
Target:	beta-2 Microglobulin (B2M)
Reactivity:	Human
Host:	Mouse
Clonality:	Monoclonal
Conjugate:	This beta-2 Microglobulin antibody is un-conjugated
Application:	Western Blotting (WB), Flow Cytometry (FACS), ELISA, Immunohistochemistry (IHC), Immunoprecipitation (IP), Immunohistochemistry (Paraffin-embedded Sections) (IHC (p)), Immunocytochemistry (ICC), Radioimmunoassay (RIA), Blocking Antibody (Inhibition)

Product Details

Brand:	IHC-plus™
Immunogen:	Purified human B2M / Beta-2-Microglobulin.
Clone:	B2M-01
Isotype:	IgG2a
Specificity:	Purified human beta2-microglobulin
Purification:	Ion exchange chromatography

Target Details

Target:	beta-2 Microglobulin (B2M)
---------	----------------------------

Target Details

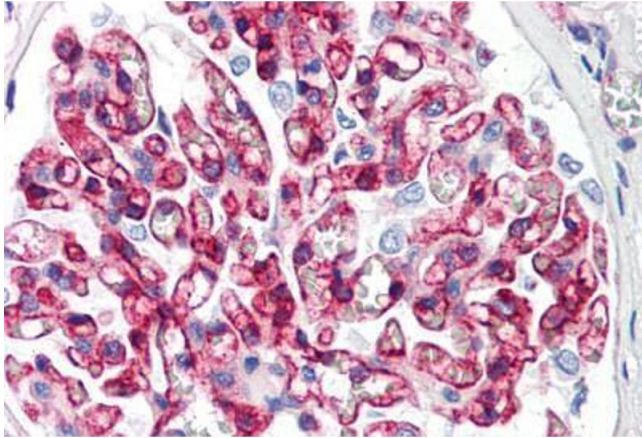
Alternative Name:	B2M / Beta 2 Microglobulin (B2M Products)
Background:	Name/Gene ID: B2M Synonyms: B2M, Beta 2 Microglobulin, Beta-2-microglobulin, Beta-2-microglobin
Gene ID:	567
UniProt:	P61769
Pathways:	TCR Signaling , Regulation of Leukocyte Mediated Immunity , Positive Regulation of Immune Effector Process

Application Details

Application Notes:	Approved: ELISA, Flo (1 µg/mL), ICC, IHC, IHC-P (10 µg/mL), Inhb, IP, RIA, WB (2 - 4 µg/mL) Usage: Immunohistochemistry: This antibody was validated for use in immunohistochemistry on a panel of 21 formalin-fixed, paraffin-embedded (FFPE) human tissues after heat induced antigen retrieval in pH 6.0 citrate buffer. After incubation with the primary antibody,
Comment:	Target Species of Antibody: Human
Restrictions:	For Research Use only

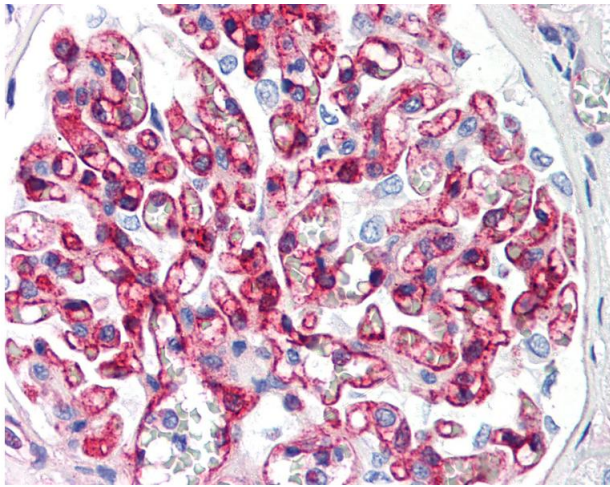
Handling

Format:	Liquid
Concentration:	Lot specific
Buffer:	PBS, 15 mM sodium azide, approx, pH 7.4.
Preservative:	Sodium azide
Precaution of Use:	This product contains Sodium azide: a POISONOUS AND HAZARDOUS SUBSTANCE which should be handled by trained staff only.
Handling Advice:	avoid freeze thaw cycles.
Storage:	4 °C, -20 °C
Storage Comment:	Short term 4°C, long term aliquot and store at -20°C, avoid freeze-thaw cycles.



Immunohistochemistry (Paraffin-embedded Sections)

Image 1. Human Kidney (formalin-fixed, paraffin-embedded) stained with B2M antibody ABIN292915 at 10 ug/ml followed by biotinylated anti-mouse IgG secondary antibody ABIN481714, alkaline phosphatase-streptavidin and chromogen.



Immunohistochemistry

Image 2. Anti-B2M antibody IHC of human kidney. Immunohistochemistry of formalin-fixed, paraffin-embedded tissue after heat-induced antigen retrieval. Antibody concentration 10 ug/ml.