



Datasheet for ABIN2929373  
**anti-FLG2 antibody (AA 1222-1368)**



[Go to Product page](#)

4 Images

### Overview

Quantity:	100 µL
Target:	FLG2
Binding Specificity:	AA 1222-1368
Reactivity:	Human
Host:	Rabbit
Clonality:	Polyclonal
Conjugate:	This FLG2 antibody is un-conjugated
Application:	Western Blotting (WB), Immunohistochemistry (IHC), Immunoprecipitation (IP), Immunofluorescence (fixed cells) (IF/ICC)

### Product Details

Immunogen:	FLG2 (Glu1222-Gln1368)
Purification:	Antigen-specific affinity chromatography followed by Protein A affinity chromatography

### Target Details

Target:	FLG2
Alternative Name:	Filaggrin 2 ( <a href="#">FLG2 Products</a> )

### Application Details

Application Notes:	Optimal working dilution should be determined by the investigator.
--------------------	--------------------------------------------------------------------

## Application Details

---

**Comment:** The stability of the kit is determined by the rate of activity loss. The loss rate is less than 5% within the expiration date under appropriate storage conditions. To minimize performance fluctuations, operation procedures and lab conditions should be strictly controlled. It is also strongly suggested that the whole assay is performed by the same user throughout.

---

**Restrictions:** For Research Use only

---

## Handling

---

**Format:** Liquid

---

**Concentration:** 500 µg/mL

---

**Buffer:** PBS, pH 7.4, containing 0.02 % Sodium azide, 50 % glycerol.

---

**Preservative:** Sodium azide

---

**Precaution of Use:** This product contains Sodium azide: a POISONOUS AND HAZARDOUS SUBSTANCE which should be handled by trained staff only.

---

**Storage:** 4 °C,-20 °C

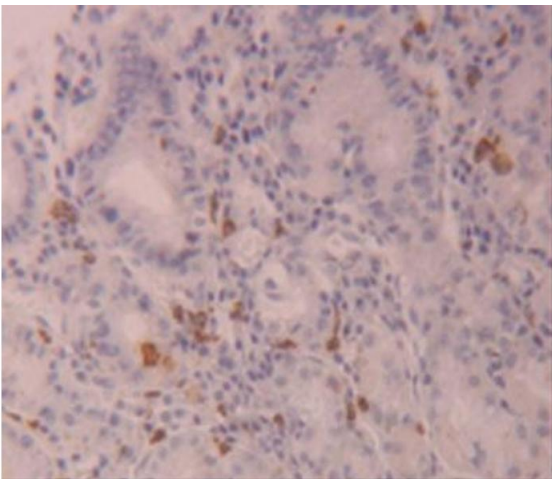
---

**Storage Comment:** Store at 4 °C for frequent use. Aliquot and store at -20 °C for one year. Avoid repeated freeze/thaw cycles.

---

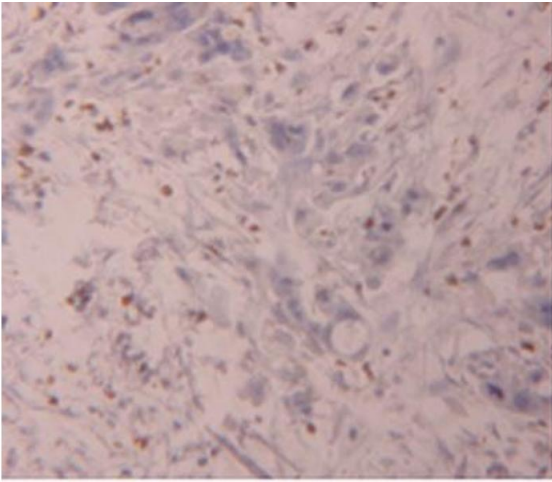
## Images

---



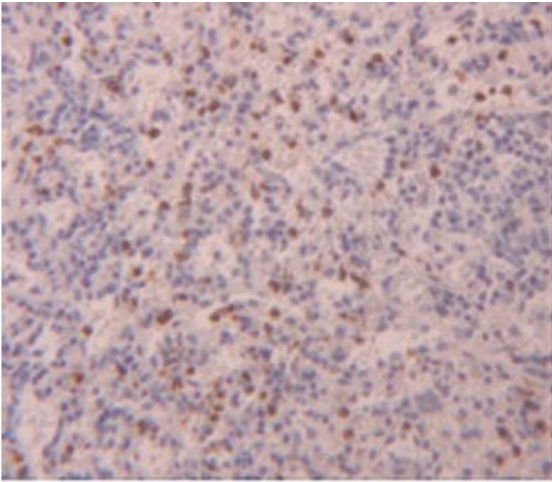
### Immunohistochemistry (Paraffin-embedded Sections)

**Image 1.** IHC-P analysis of Human Stomach Tissue, with DAB staining.



#### Immunohistochemistry (Paraffin-embedded Sections)

**Image 2.** IHC-P analysis of Human Pancreas Tissue, with DAB staining.



#### Immunohistochemistry (Paraffin-embedded Sections)

**Image 3.** IHC-P analysis of Human Spleen Tissue, with DAB staining.

Please check the [product details page](#) for more images. Overall 4 images are available for ABIN2929373.