

Datasheet for ABIN292991
anti-CRLF2 antibody



[Go to Product page](#)

1 Image

Overview

Quantity:	100 µg
Target:	CRLF2
Reactivity:	Human
Host:	Mouse
Clonality:	Monoclonal
Conjugate:	This CRLF2 antibody is un-conjugated
Application:	Western Blotting (WB), Flow Cytometry (FACS)

Product Details

Immunogen:	Recombinant human CRLF2. Type of Immunogen: Recombinant protein
Clone:	1B4
Isotype:	IgG1
Specificity:	Human TSLP-R: Fc protein.
Purification:	Affinity purified

Target Details

Target:	CRLF2
Alternative Name:	CRLF2 / TSLPR (CRLF2 Products)

Target Details

Background:	Name/Gene ID: CRLF2 Synonyms: CRLF2, IL-XR, ILXR, p2RY8/CRLF2 fusion, TSLP receptor, TSLPR, CRL2, CRLF2Y, Cytokine receptor-like 2
Gene ID:	64109
UniProt:	Q9HC73

Application Details

Application Notes:	Optimal working dilution should be determined by the investigator.
Comment:	Target Species of Antibody: Human
Restrictions:	For Research Use only

Handling

Format:	Liquid
Concentration:	Lot specific
Buffer:	Phosphate-buffered solution, pH 7.2, 0.09 % sodium azide.
Preservative:	Sodium azide
Precaution of Use:	This product contains Sodium azide: a POISONOUS AND HAZARDOUS SUBSTANCE which should be handled by trained staff only.
Storage:	4 °C
Storage Comment:	4°C. Store undiluted.

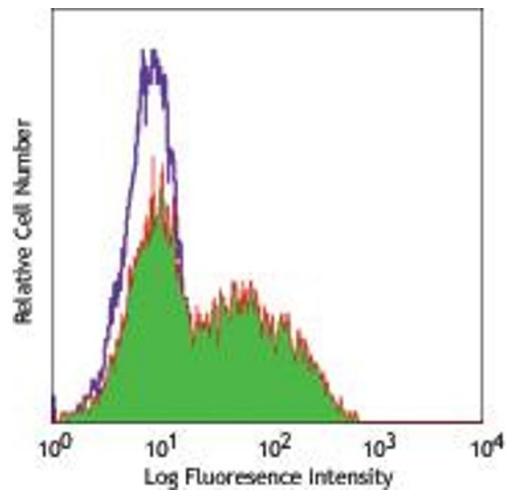


Image 1.