

Datasheet for ABIN2930430

**anti-Glucosylceramidase antibody**[Go to Product page](#)**1** Image

## Overview

Quantity:	100 µL
Target:	Glucosylceramidase (GLCM)
Reactivity:	Human
Host:	Mouse
Clonality:	Monoclonal
Conjugate:	This Glucosylceramidase antibody is un-conjugated
Application:	Western Blotting (WB)

## Product Details

Immunogen:	Human GC.
Isotype:	IgM

## Target Details

Target:	Glucosylceramidase (GLCM)
Alternative Name:	Glucosylceramidase ( <a href="#">GLCM Products</a> )
UniProt:	<a href="#">P04062</a>

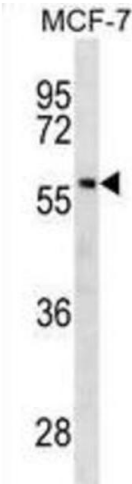
## Application Details

Application Notes:	Optimal working dilution should be determined by the investigator.
Restrictions:	For Research Use only

Handling

Format:	Liquid
Buffer:	Mouse monoclonal antibody supplied in crude ascites with 0.09 % (W/V) sodium azide.
Preservative:	Sodium azide
Precaution of Use:	This product contains Sodium azide: a POISONOUS AND HAZARDOUS SUBSTANCE which should be handled by trained staff only.
Storage:	-20 °C
Storage Comment:	Aliquot and store at -20 °C. Avoid repeated freeze/thaw cycles.

Images



Western Blotting

Image 1.