



Datasheet for ABIN2933068  
**anti-HIST2H3A antibody (AA 1-136)**



[Go to Product page](#)

2 Images

Overview

Quantity:	100 µL
Target:	HIST2H3A
Binding Specificity:	AA 1-136
Reactivity:	Mouse
Host:	Rabbit
Clonality:	Polyclonal
Conjugate:	This HIST2H3A antibody is un-conjugated
Application:	Western Blotting (WB), ELISA, Immunohistochemistry (IHC), Immunofluorescence (fixed cells) (IF/ICC)

Product Details

Immunogen: HIST2H3A (Met1-Ala136)

Target Details

Target: HIST2H3A  
Alternative Name: Histone Cluster 2, H3a ([HIST2H3A Products](#))

Application Details

Restrictions: For Research Use only

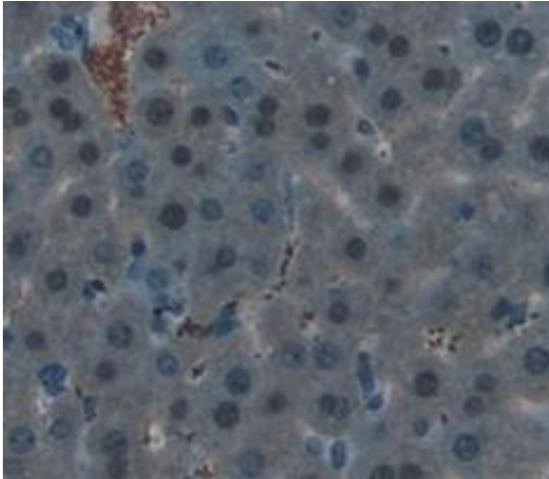
## Handling

Concentration: 200 µg/mL

Storage: -20 °C

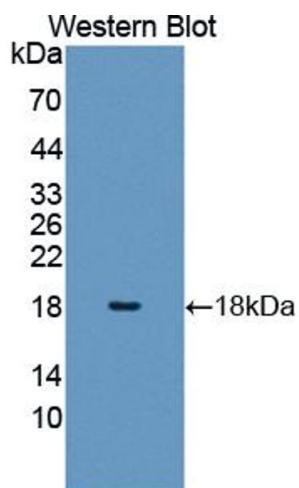
Storage Comment: Aliquot and store at -20 °C. Avoid exposure to light. Avoid repeated freeze/thaw cycles.

## Images



### Immunohistochemistry (Paraffin-embedded Sections)

**Image 1.** IHC-P analysis of Kidney tissue, with DAB staining.



### Western Blotting

**Image 2.** Western blot analysis of the recombinant protein.