

Datasheet for ABIN293627  
**anti-LAT antibody (Cytoplasmic Domain)**



[Go to Product page](#)

2 Images

## Overview

Quantity:	50 µg
Target:	LAT
Binding Specificity:	Cytoplasmic Domain
Reactivity:	Human
Host:	Mouse
Clonality:	Monoclonal
Conjugate:	This LAT antibody is un-conjugated
Application:	Western Blotting (WB), Immunohistochemistry (IHC), Immunoprecipitation (IP), Immunohistochemistry (Paraffin-embedded Sections) (IHC (p))

## Product Details

Brand:	IHC-plus™
Immunogen:	Recombinant human LAT. Type of Immunogen: Recombinant protein
Clone:	LAT1111
Isotype:	IgG1
Specificity:	Partial recombinant protein (cytoplasmic domain of human LAT)
Purification:	Affinity purified

## Target Details

---

Target:	LAT
Alternative Name:	LAT1 / LAT ( <a href="#">LAT Products</a> )
Background:	Name/Gene ID: LAT  Synonyms: LAT, p36-38, Pp36, LAT1
Gene ID:	27040
UniProt:	<a href="#">O43561</a>
Pathways:	<a href="#">TCR Signaling</a> , <a href="#">Fc-epsilon Receptor Signaling Pathway</a>

## Application Details

---

Application Notes:	Approved: IHC, IHC-P (10 µg/mL), IP, WB  Usage: Immunohistochemistry: This antibody was validated for use in immunohistochemistry on a panel of 21 formalin-fixed, paraffin-embedded (FFPE) human tissues after heat induced antigen retrieval in pH 6.0 citrate buffer. After incubation with the primary antibody, slides were incubated with biotinylated secondary antibody, followed by alkaline phosphatase-streptavidin and chromogen. The stained slides were evaluated by a pathologist to confirm staining specificity. The optimal working concentration for this antibody was determined to be 10 µg/mL.
Comment:	Target Species of Antibody: Human
Restrictions:	For Research Use only

## Handling

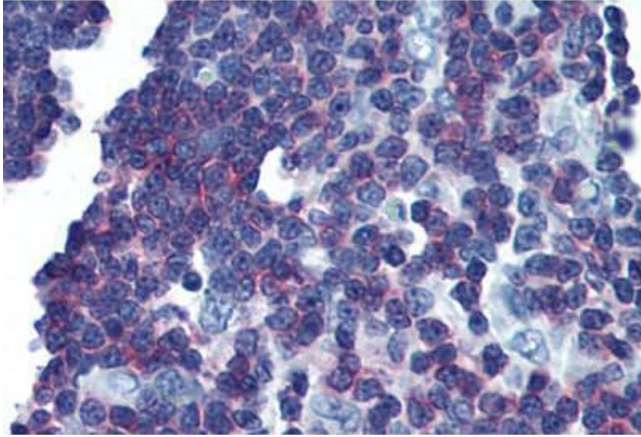
---

Format:	Liquid
Concentration:	Lot specific
Buffer:	Phosphate-buffered solution, pH 7.2, 0.09 % sodium azide.
Preservative:	Sodium azide
Precaution of Use:	This product contains Sodium azide: a POISONOUS AND HAZARDOUS SUBSTANCE which should be handled by trained staff only.
Storage:	4 °C

## Handling

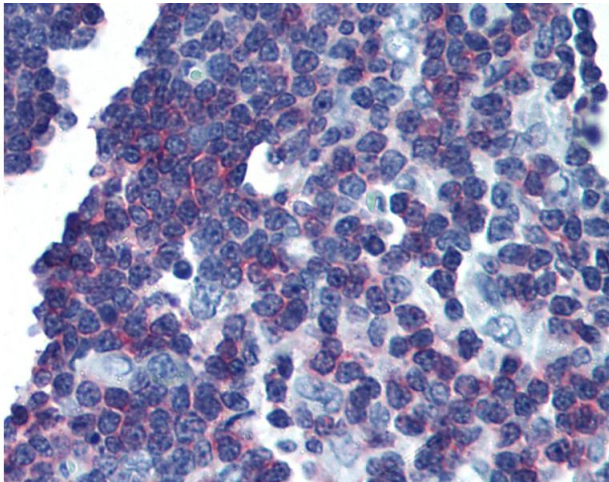
Storage Comment: Store at 4°C.

## Images



### Immunohistochemistry (Paraffin-embedded Sections)

**Image 1.** Human Thymus (formalin-fixed, paraffin-embedded) stained with LAT antibody ABIN293627 at 10 ug/ml followed by biotinylated anti-mouse IgG secondary antibody ABIN481714, alkaline phosphatase-streptavidin and chromogen.



### Immunohistochemistry

**Image 2.** Anti-LAT antibody IHC of human thymus. Immunohistochemistry of formalin-fixed, paraffin-embedded tissue after heat-induced antigen retrieval. Antibody concentration 10 ug/ml.