



Datasheet for ABIN2938096  
**anti-LOXL2 antibody (AA 323-427)**



[Go to Product page](#)

2 Images

Overview

Quantity:	100 µL
Target:	LOXL2
Binding Specificity:	AA 323-427
Reactivity:	Human
Host:	Rabbit
Clonality:	Polyclonal
Conjugate:	This LOXL2 antibody is un-conjugated
Application:	Western Blotting (WB), Immunohistochemistry (IHC), Immunoprecipitation (IP), Immunofluorescence (fixed cells) (IF/ICC)

Product Details

Immunogen:	LOXL2 (Gln323-Pro427)
Purification:	Antigen-specific affinity chromatography followed by Protein A affinity chromatography

Target Details

Target:	LOXL2
Alternative Name:	Lysyl Oxidase Like Protein 2 ( <a href="#">LOXL2 Products</a> )
UniProt:	<a href="#">Q9Y4K0</a>
Pathways:	<a href="#">Chromatin Binding</a>

## Application Details

Application Notes: Optimal working dilution should be determined by the investigator.

Restrictions: For Research Use only

## Handling

Format: Liquid

Concentration: 500 µg/mL

Buffer: PBS, pH 7.4, containing 0.02 % Sodium azide, 50 % glycerol.

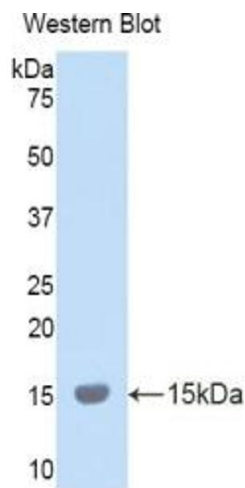
Preservative: Sodium azide

Precaution of Use: This product contains Sodium azide: a POISONOUS AND HAZARDOUS SUBSTANCE which should be handled by trained staff only.

Storage: 4 °C, -20 °C

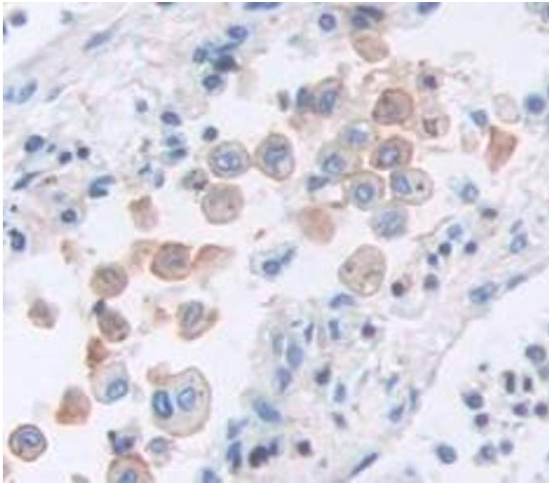
Storage Comment: Store at 4 °C for frequent use. Aliquot and store at -20 °C for one year. Avoid repeated freeze/thaw cycles.

## Images



### Western Blotting

**Image 1.** Western blot analysis of the recombinant protein.



### Immunohistochemistry (Paraffin-embedded Sections)

**Image 2.** IHC-P analysis of Human Tissue, with DAB staining.