

Datasheet for ABIN294446  
**anti-MT01 antibody (C-Term)**[Go to Product page](#)

## 2 Images

## Overview

Quantity:	50 µg
Target:	MT01
Binding Specificity:	C-Term
Reactivity:	Human
Host:	Rabbit
Clonality:	Polyclonal
Conjugate:	This MT01 antibody is un-conjugated
Application:	Western Blotting (WB), ELISA, Immunohistochemistry (IHC), Immunohistochemistry (Paraffin-embedded Sections) (IHC (p))

## Product Details

Brand:	IHC-plus™
Immunogen:	Synthetic peptide from human MT01.  Type of Immunogen: Synthetic peptide
Specificity:	Synthetic peptide corresponding to C-terminal residues of human Protein MT01 homolog, mitochondrial precursor
Purification:	Immunoaffinity purified

## Target Details

Target:	MT01
---------	------

## Target Details

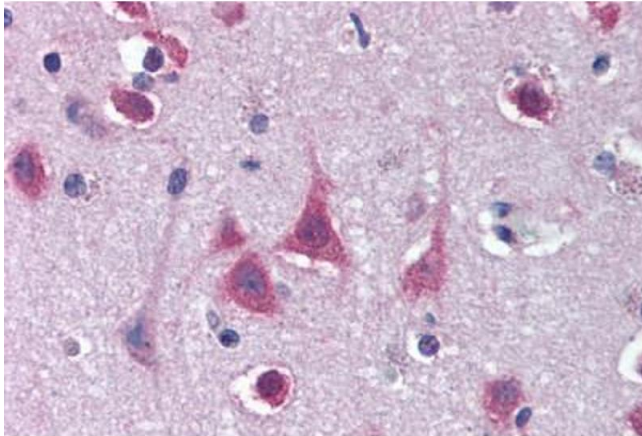
Abstract:	<a href="#">MT01 Products</a>
Background:	Name/Gene ID: MT01  Synonyms: MT01, COXPD10, CGI-02, Homolog of yeast Mto1, Mitochondrial MT01-3
Gene ID:	25821
UniProt:	<a href="#">Q9Y2Z2</a>

## Application Details

Application Notes:	Approved: ELISA (1 µg/mL), IHC, IHC-P (20 µg/mL), WB (1 µg/mL)  Usage: Immunohistochemistry: This antibody was validated for use in immunohistochemistry on a panel of 21 formalin-fixed, paraffin-embedded (FFPE) human tissues after heat induced antigen retrieval in pH 6.0 citrate buffer. After incubation with the primary antibody, slides were incubated with biotinylated secondary antibody, followed by alkaline phosphatase-streptavidin and chromogen. The stained slides were evaluated by a pathologist to confirm staining specificity. The optimal working concentration for this antibody was determined to be 20 µg/mL.
Comment:	Target Species of Antibody: Human
Restrictions:	For Research Use only

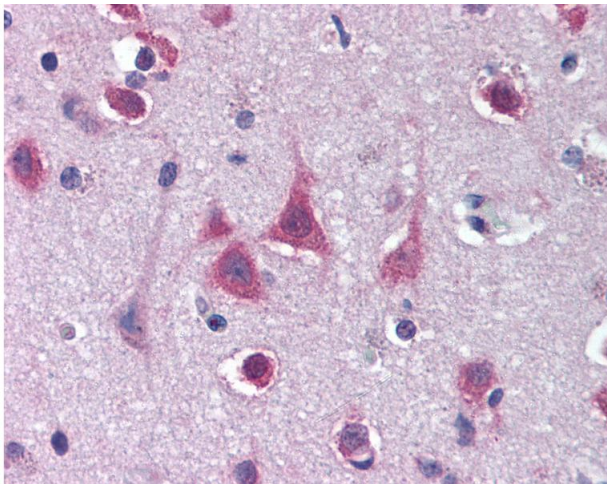
## Handling

Format:	Liquid
Concentration:	Lot specific
Buffer:	PBS, 0.01 % sodium azide, 50 % glycerol.
Preservative:	Sodium azide
Precaution of Use:	This product contains Sodium azide: a POISONOUS AND HAZARDOUS SUBSTANCE which should be handled by trained staff only.
Handling Advice:	Avoid repeated freezing and thawing.
Storage:	4 °C,-20 °C
Storage Comment:	4°C or -20°C, Avoid freeze-thaw cycles.



#### Immunohistochemistry (Paraffin-embedded Sections)

**Image 1.** Human Brain, Cortex (formalin-fixed, paraffin-embedded) stained with MT01 antibody ABIN294446 at 20 ug/ml followed by biotinylated goat anti-rabbit IgG secondary antibody ABIN481713, alkaline phosphatase-streptavidin and chromogen.



#### Immunohistochemistry

**Image 2.** Anti-MT01 antibody IHC of human brain, cortex. Immunohistochemistry of formalin-fixed, paraffin-embedded tissue after heat-induced antigen retrieval. Antibody concentration 20 ug/ml.