



Datasheet for ABIN294958
anti-His Tag antibody (C-Term)



[Go to Product page](#)

3 Images

Overview

Quantity:	40 µg
Target:	His Tag
Binding Specificity:	C-Term
Reactivity:	Please inquire
Host:	Rabbit
Clonality:	Polyclonal
Conjugate:	This His Tag antibody is un-conjugated
Application:	Western Blotting (WB), ELISA

Product Details

Immunogen:	His epitope tag peptide HHHHHH conjugated to KLH. Type of Immunogen: Synthetic peptide
Sequence:	HHHHHH
Isotype:	IgG
Specificity:	Over-expressed fusion proteins containing either amino- or carboxy-terminal His epitope tags
Purification:	Immunoaffinity purified

Target Details

Target:	His Tag
---------	---------

Target Details

Abstract: [His Tag Products](#)

Target Type: Tag

Application Details

Application Notes: Optimal working dilution should be determined by the investigator.

Restrictions: For Research Use only

Handling

Format: Lyophilized

Reconstitution: Deionized Water.

Concentration: Lot specific

Buffer: Lyophilized, PBS, pH 7.4, 0.02 % sodium azide

Preservative: Sodium azide

Precaution of Use: This product contains Sodium azide: a POISONOUS AND HAZARDOUS SUBSTANCE which should be handled by trained staff only.

Handling Advice: Avoid repeat freeze-thaw cycles.

Storage: 4 °C, -20 °C

Storage Comment: Short term: 4°C. Long term: Store at -20°C. Avoid freeze-thaw cycles.

Images

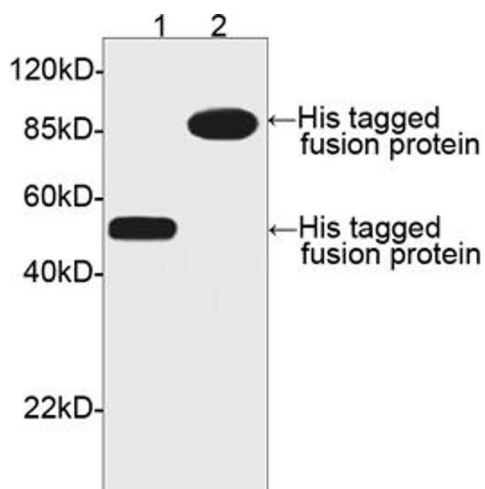


Image 1.

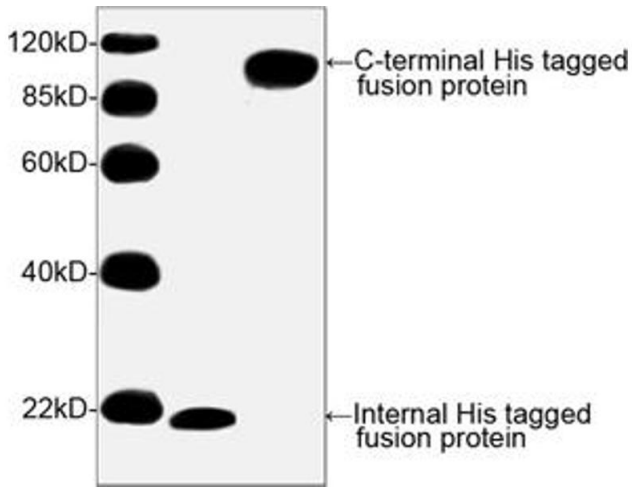


Image 2.

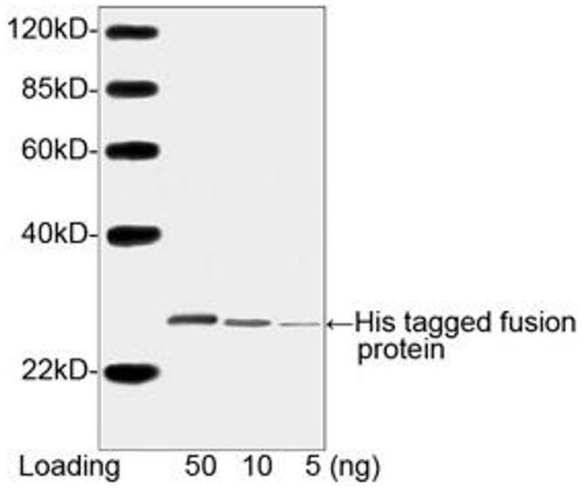


Image 3.