



[Go to Product page](#)

Datasheet for ABIN2964748

anti-GSK3 alpha/beta antibody

2 Images

Overview

Quantity:	10 blots
Target:	GSK3 alpha/beta (GSK3a/b)
Reactivity:	Human, Mouse, Rat, Xenopus laevis
Host:	Mouse
Clonality:	Monoclonal
Conjugate:	This GSK3 alpha/beta antibody is un-conjugated
Application:	Western Blotting (WB), Immunohistochemistry (IHC), ELISA, Immunohistochemistry (Paraffin-embedded Sections) (IHC (p)), Immunoprecipitation (IP)

Product Details

Brand:	IHC-plus™
Immunogen:	Produced in mouse against a recombinant Xenopus laevis protein. Type of Immunogen: Recombinant protein
Isotype:	IgG2a
Specificity:	Recognizes human, mouse, rat and Xenopus laevis GSK-3a/b. Recognizes two isoforms of glycogen synthase kinase, GSK-3a, a 51kD protein and GSK-3b, a 47kD protein.
Purification:	Protein G purified

Target Details

Target:	GSK3 alpha/beta (GSK3a/b)
---------	---------------------------

Target Details

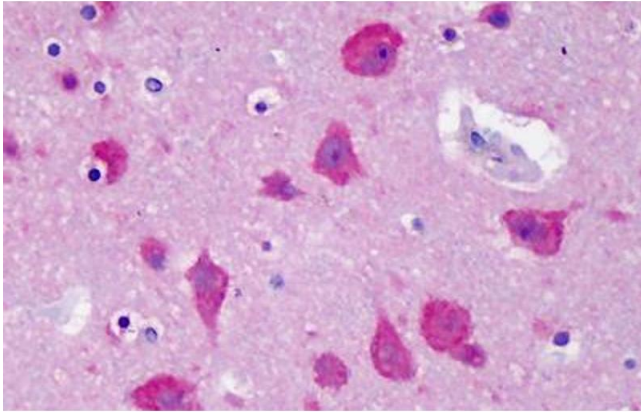
Alternative Name:	GSK3 Alpha+Beta (GSK3a/b Products)
Background:	This antibody detects: GSK3 Alpha+Beta

Application Details

Application Notes:	Approved: ELISA, IHC, IHC-P (10 - 15 µg/mL), IP, WB (1:1000 - 1:2000) Usage: Suitable for use in ELISA, Western Blot, Immunoprecipitation. Western Blot: 1:1000-1:2000.
Comment:	Target Species of Antibody: Xenopus
Restrictions:	For Research Use only

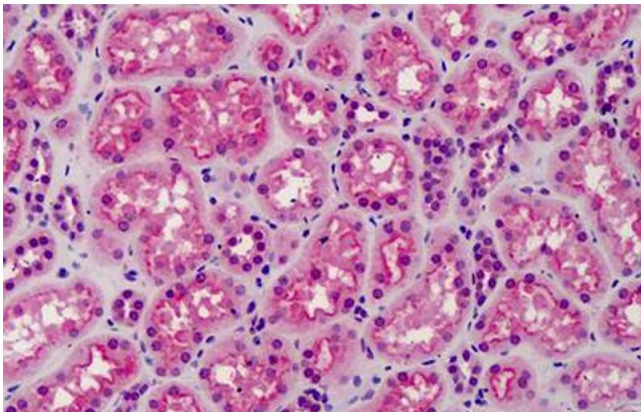
Handling

Format:	Liquid
Concentration:	Lot specific
Buffer:	PBS, pH 7.4, 0.01 % sodium azide.
Preservative:	Sodium azide
Precaution of Use:	This product contains Sodium azide: a POISONOUS AND HAZARDOUS SUBSTANCE which should be handled by trained staff only.
Handling Advice:	avoid freeze thaw cycles
Storage:	4 °C,-20 °C
Storage Comment:	Short term 4°C, long term aliquot and store at -20°C, avoid freeze-thaw cycles.



Immunohistochemistry

Image 1. Anti-GSK3A/B antibody IHC of human brain. Immunohistochemistry of formalin-fixed, paraffin-embedded tissue after heat-induced antigen retrieval. Antibody ABIN1968484 concentration 10 µg/mL.



Immunohistochemistry

Image 2. Anti-GSK3A/B antibody IHC of human kidney. Immunohistochemistry of formalin-fixed, paraffin-embedded tissue after heat-induced antigen retrieval. Antibody ABIN1968484 concentration 10 µg/mL.