

Datasheet for ABIN296663

anti-AP3D1 antibody (AA 686-698)



[Go to Product page](#)

2 Images

Overview

Quantity:	50 µg
Target:	AP3D1
Binding Specificity:	AA 686-698
Reactivity:	Human, Chicken
Host:	Goat
Clonality:	Polyclonal
Conjugate:	This AP3D1 antibody is un-conjugated
Application:	Western Blotting (WB), ELISA, Immunohistochemistry (IHC), Immunohistochemistry (Paraffin-embedded Sections) (IHC (p))

Product Details

Brand:	IHC-plus™
Immunogen:	Synthetic peptide from human AP3D1 / AP3. Type of Immunogen: Synthetic peptide
Specificity:	Aa 686-698 of Human AP3D1.
Purification:	Immunoaffinity purified

Target Details

Target:	AP3D1
Alternative Name:	AP3D1 / Adaptin Delta (AP3D1 Products)

Target Details

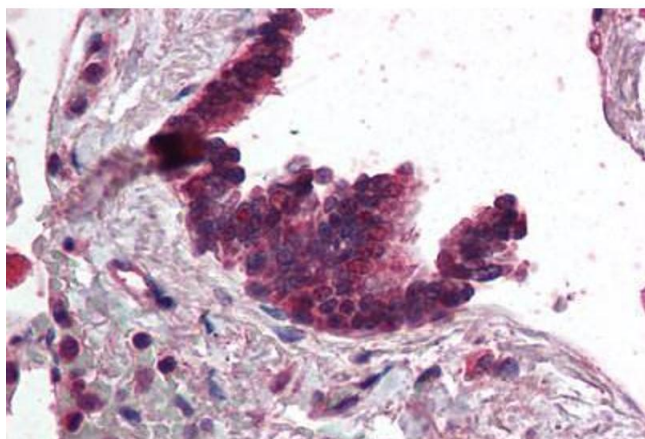
Background:	Name/Gene ID: AP3D1 Synonyms: AP3D1, ADTD, Adaptin, delta, AP-3 complex subunit delta, AP-3 complex subunit delta-1, Delta adaptin, Delta-adaptin, Delta-adaptin, partial CDS, Ap-3 complex delta subunit, HBLVR
Gene ID:	8943
UniProt:	O14617

Application Details

Application Notes:	Approved: ELISA (1:5000 - 1:20000), IHC, IHC-P (2.5 µg/mL), WB (1:500 - 1:2000) Usage: Immunohistochemistry: This antibody was validated for use in immunohistochemistry on a panel of 21 formalin-fixed, paraffin-embedded (FFPE) human tissues after heat induced antigen retrieval in pH 6.0 citrate buffer. After incubation with the primary antibody, slides were incubated with biotinylated secondary antibody, followed by alkaline phosphatase-streptavidin and chromogen. The stained slides were evaluated by a pathologist to confirm staining specificity. The optimal working concentration for this antibody was determined to be 2.5 µg/mL.
Comment:	Target Species of Antibody: Human
Restrictions:	For Research Use only

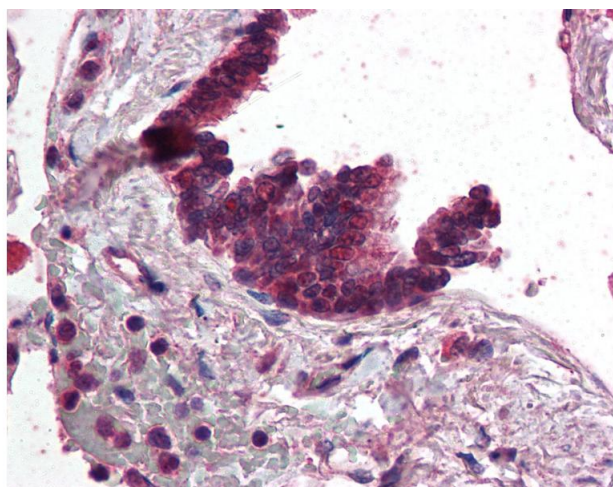
Handling

Format:	Liquid
Concentration:	Lot specific
Buffer:	0.02 M potassium phosphate, 0.15 M sodium chloride, pH 7.2, 0.01 % sodium azide.
Preservative:	Sodium azide
Precaution of Use:	This product contains Sodium azide: a POISONOUS AND HAZARDOUS SUBSTANCE which should be handled by trained staff only.
Handling Advice:	Avoid repeated freezing and thawing.
Storage:	4 °C,-20 °C
Storage Comment:	4°C or -20°C, Avoid freeze-thaw cycles.



Immunohistochemistry (Paraffin-embedded Sections)

Image 1. Human Lung, Respiratory Epithelium (formalin-fixed, paraffin-embedded) stained with AP3D1 antibody ABIN296663 at 2.5 ug/ml followed by biotinylated anti-goat IgG secondary antibody ABIN481715, alkaline phosphatase-streptavidin and chromogen.



Immunohistochemistry

Image 2. Anti-AP3D1 antibody IHC of human lung, respiratory epithelium. Immunohistochemistry of formalin-fixed, paraffin-embedded tissue after heat-induced antigen retrieval. Antibody concentration 5 ug/ml.