

Datasheet for ABIN2967162

anti-ICAM2 antibody[Go to Product page](#)**1** Image

Overview

Quantity:	0.1 mg
Target:	ICAM2
Reactivity:	Human
Host:	Mouse
Clonality:	Monoclonal
Conjugate:	This ICAM2 antibody is un-conjugated
Application:	Flow Cytometry (FACS), Immunoprecipitation (IP), Immunohistochemistry (Frozen Sections) (IHC (fro))

Product Details

Immunogen:	Human CD102 cDNA transfected COS cells
Clone:	CBR-IC2-2
Isotype:	IgG2a
Specificity:	The mouse monoclonal antibody CBR-IC2/2 recognizes an extracellular epitope of CD102 (ICAM-2), an approximately 55 kDa type I transmembrane glycoprotein expressed mainly on vascular endothelial cells and follicular dendritic cells, in lower amount on lymphocytes, monocytes and platelets.
Cross-Reactivity (Details):	Human
Purification:	Purified by protein-A affinity chromatography.
Purity:	> 95 % (by SDS-PAGE)

Target Details

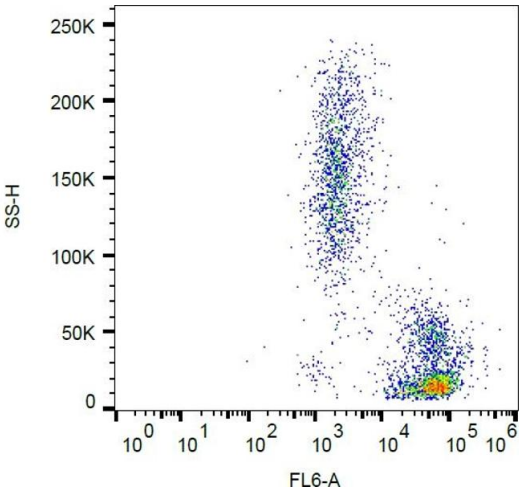
Target:	ICAM2
Alternative Name:	CD102 / ICAM-2 (ICAM2 Products)
Background:	Intercellular adhesion molecule 2,CD102 / ICAM-2 (intracellular cell adhesion molecule-2), a counter receptor of LFA-1 (CD11a/CD18), is a transmembrane glycoprotein with two extracellular IgC-like domains and intracellular C-terminal tail. It is involved in lymphocyte recirculation and homing to the sites of inflammation. Through interaction with integrins it provides to the immune cells costimulatory signals. Expression of CD102 on blood cells (lymphocytes, monocytes, thrombocytes) is lower than on endothelium and follicular dendritic cells. CD102 levels are upregulated in lymph nodes with malignant infiltration.,ICAM2
Gene ID:	3384
UniProt:	P13598

Application Details

Application Notes:	Flow cytometry: Recommended dilution: 2-4 µg/mL.
Restrictions:	For Research Use only

Handling

Concentration:	1 mg/mL
Buffer:	Phosphate buffered saline (PBS), pH 7.4, 15 mM sodium azide
Preservative:	Sodium azide
Precaution of Use:	This product contains Sodium azide: a POISONOUS AND HAZARDOUS SUBSTANCE which should be handled by trained staff only.
Storage:	4 °C
Storage Comment:	Store at 2-8°C. Do not freeze.



Flow Cytometry

Image 1. Flow cytometry analysis (surface staining) of human peripheral blood with anti-human CD102 (CBR-IC2/2) purified, GAM-APC.