



[Go to Product page](#)

Datasheet for ABIN2967163  
**anti-ICAM2 antibody (PE)**

2 Images

### Overview

Quantity:	100 tests
Target:	ICAM2
Reactivity:	Human
Host:	Mouse
Clonality:	Monoclonal
Conjugate:	This ICAM2 antibody is conjugated to PE
Application:	Flow Cytometry (FACS)

### Product Details

Immunogen:	Human CD102 cDNA transfected COS cells
Clone:	CBR-IC2-2
Isotype:	IgG2a
Specificity:	The mouse monoclonal antibody CBR-IC2/2 recognizes an extracellular epitope of CD102 (ICAM-2), an approximately 55 kDa type I transmembrane glycoprotein expressed mainly on vascular endothelial cells and follicular dendritic cells, in lower amount on lymphocytes, monocytes and platelets.
Cross-Reactivity (Details):	Human
Purification:	Purified antibody is conjugated with R-phycoerythrin (PE) under optimum conditions. Unconjugated antibody and free fluorochrome are removed by size-exclusion chromatography.

## Target Details

---

Target:	ICAM2
Alternative Name:	CD102 / ICAM-2 ( <a href="#">ICAM2 Products</a> )
Background:	Intercellular adhesion molecule 2,CD102 / ICAM-2 (intracellular cell adhesion molecule-2), a counter receptor of LFA-1 (CD11a/CD18), is a transmembrane glycoprotein with two extracellular IgC-like domains and intracellular C-terminal tail. It is involved in lymphocyte recirculation and homing to the sites of inflammation. Through interaction with integrins it provides to the immune cells costimulatory signals. Expression of CD102 on blood cells (lymphocytes, monocytes, thrombocytes) is lower than on endothelium and follicular dendritic cells. CD102 levels are upregulated in lymph nodes with malignant infiltration.,ICAM2
Gene ID:	3384
UniProt:	<a href="#">P13598</a>

## Application Details

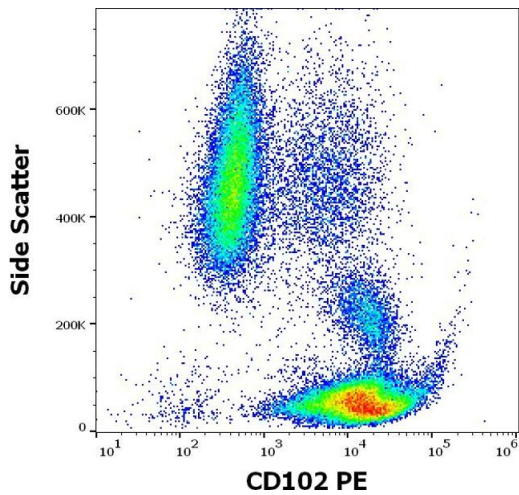
---

Application Notes:	Flow cytometry: The reagent is designed for analysis of human blood cells using 10 µL reagent / 100 µL of whole blood or 10 <sup>6</sup> cells in a suspension. The content of a vial (1 ml) is sufficient for 100 tests.
Comment:	The purified antibody is conjugated with R-Phycoerythrin (PE) under optimum conditions. The conjugate is purified by size-exclusion chromatography and adjusted for direct use. No reconstitution is necessary.
Restrictions:	For Research Use only

## Handling

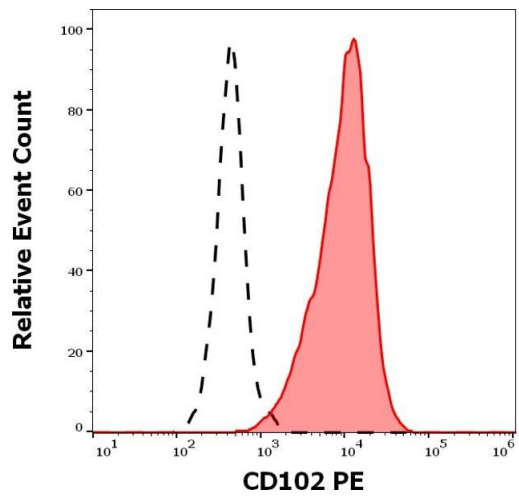
---

Buffer:	Stabilizing phosphate buffered saline (PBS), pH 7.4, 15 mM sodium azide
Preservative:	Sodium azide
Precaution of Use:	This product contains Sodium azide: a POISONOUS AND HAZARDOUS SUBSTANCE which should be handled by trained staff only.
Storage:	4 °C
Storage Comment:	Store at 2-8°C. Protect from prolonged exposure to light. Do not freeze.



### Flow Cytometry

**Image 1.** Flow cytometry surface staining pattern of human peripheral whole blood stained using anti-human CD102 (CBR-IC2/2) PE antibody (10  $\mu$ L reagent / 100  $\mu$ L of peripheral whole blood).



### Flow Cytometry

**Image 2.** Separation of human lymphocytes (red-filled) from neutrophil granulocytes (black-dashed) in flow cytometry analysis (surface staining) of human peripheral whole blood stained using anti-human CD102 (CBR-IC2/2) PE antibody (10  $\mu$ L reagent / 100  $\mu$ L of peripheral whole blood).