

Datasheet for ABIN2967173  
**anti-CCL20 antibody (PE-DyLight 594)**

## 3 Images

[Go to Product page](#)

## Overview

Quantity:	100 tests
Target:	CCL20
Reactivity:	Human
Host:	Mouse
Clonality:	Monoclonal
Conjugate:	This CCL20 antibody is conjugated to PE-DyLight 594
Application:	Flow Cytometry (FACS)

## Product Details

Immunogen:	Human IL-2 dependent T cells
Clone:	UCHL1
Isotype:	IgG2a
Specificity:	The antibody UCHL1 recognizes an extracellular epitope of CD45R0, a 180 kDa low molecular weight isoform of the leukocyte common antigen (LCA). The antigen is expressed on a subset of memory/activated T cells and on cortical thymocytes.
Cross-Reactivity (Details):	Human
Purification:	Purified antibody is conjugated with activated tandem dye of R-phycoerythrin-DyLight®594 (PE-DyLight®594) under optimum conditions and unconjugated antibody and free fluorochrome are removed by size-exclusion chromatography.

## Target Details

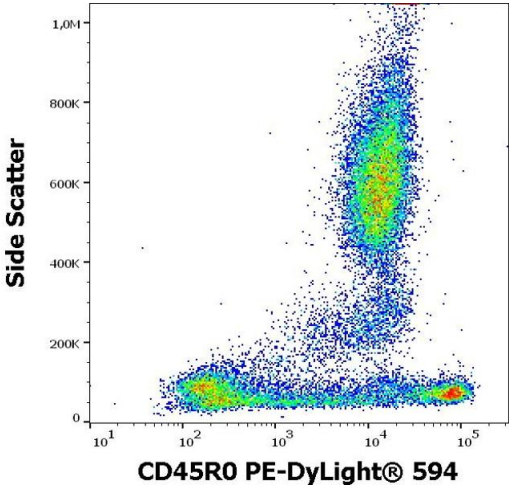
Target:	CCL20
Alternative Name:	CD45R0 ( <a href="#">CCL20 Products</a> )
Background:	CD45R0 is the shortest isoform of a receptor-type protein tyrosine phosphatase, CD45 glycoprotein. CD45 is crucial in lymphocyte development and antigen signaling, serving as an important regulator of Src-family kinases, promotes cell survival by modulating integrin-mediated signal transduction pathway and is also involved in DNA fragmentation during apoptosis. CD45 isoforms differ in their extracellular domains, whereas they share identical transmembrane and cytoplasmic domains. These isoforms differ in their ability to translocate into the glycosphingolipid-enriched membrane domains and their expression depends on cell type and physiological state of the cell. CD45R0 is expressed e.g. on macrophages, CD8+ T cells, activated T cells and myeloma cells.,PTPRCR, T200R0
Pathways:	<a href="#">The Global Phosphorylation Landscape of SARS-CoV-2 Infection</a>

## Application Details

Application Notes:	Flow cytometry: The reagent is designed for analysis of human blood cells using 4 µL reagent / 100 µL of whole blood or 10 <sup>6</sup> cells in a suspension. The content of a vial (0.4 ml) is sufficient for 100 tests.
Comment:	The purified antibody is conjugated with tandem dye PE-DyLight™, 594 (PE-DL594) under optimum conditions. The conjugate is purified by size-exclusion chromatography and adjusted for direct use. No reconstitution is necessary.
Restrictions:	For Research Use only

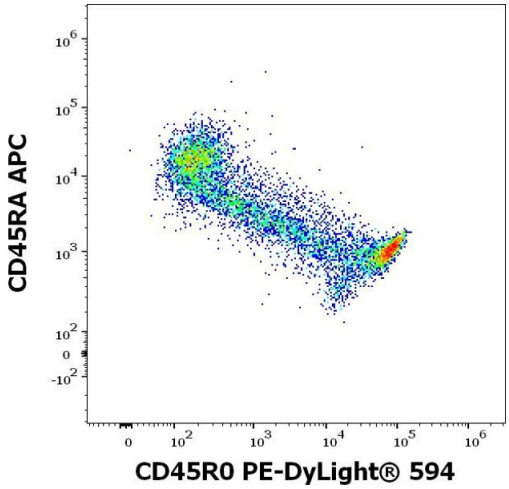
## Handling

Buffer:	Stabilizing phosphate buffered saline (PBS), pH 7.4, 15 mM sodium azide
Preservative:	Sodium azide
Precaution of Use:	This product contains Sodium azide: a POISONOUS AND HAZARDOUS SUBSTANCE which should be handled by trained staff only.
Storage:	4 °C
Storage Comment:	Store at 2-8°C. Protect from prolonged exposure to light. Do not freeze.



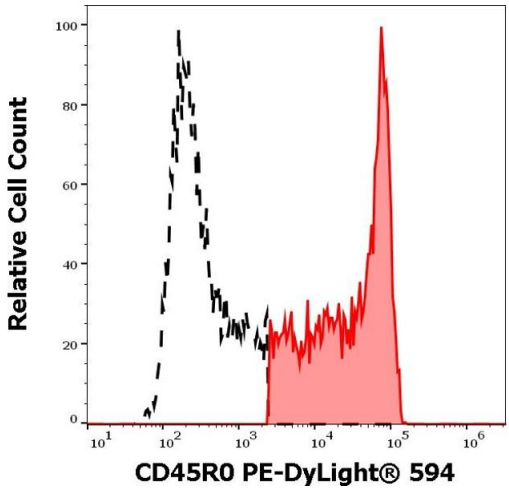
Flow Cytometry

**Image 1.** Flow cytometry surface staining pattern of human peripheral whole blood stained using anti-human CD45R0 (UCHL1) PE-DyLight® 594 antibody (4 µL reagent / 100 µL of peripheral whole blood).



Flow Cytometry

**Image 2.** Flow cytometry multicolor surface staining of human lymphocytes stained using anti-human CD45R0 (UCHL1) PE-DyLight® 594 antibody (4 µL reagent / 100 µL of peripheral whole blood) and anti-human CD45RA (MEM-56) APC antibody (10 µL reagent / 100 µL of peripheral whole blood).



Flow Cytometry

**Image 3.** Separation of human CD45R0 positive CD45RA negative lymphocytes (red-filled) from CD45R0 negative CD45RA positive lymphocytes (black-dashed) in flow cytometry analysis (surface staining) of human peripheral whole blood stained using anti-human CD45R0 (UCHL1) PE-DyLight® 594 antibody (4 µL reagent / 100 µL of peripheral whole blood).