



Datasheet for ABIN2967687

## MSE Protein



[Go to Product page](#)

### 1 Image

#### Overview

Quantity:	100 µg
Target:	MSE
Origin:	Chicken
Source:	Escherichia coli (E. coli)
Protein Type:	Recombinant
Application:	ELISA, Immunoprecipitation (IP), SDS-PAGE (SDS), Western Blotting (WB)

#### Product Details

Characteristics:	Chicken Enolase, Muscle Specific (MSE) Protein
Purity:	> 95 %

#### Target Details

Target:	MSE
Alternative Name:	Enolase, Muscle Specific ( <a href="#">MSE Products</a> )
Molecular Weight:	79.2 kDa
UniProt:	<a href="#">P07322</a>

#### Application Details

Comment:	Please note that the majority of this suppliers proteins are partial length rather than full length. We recommend customers to inquire.
----------	--------------------------------------------------------------------------------------------------------------------------------------------

## Application Details

Restrictions: For Research Use only

## Handling

Format: Liquid

Concentration: 200 µg/mL

Buffer: Prior to lyophilization: PBS, pH 7.4, containing 0.01 % SKL, 1 mM DTT, 5 % Trehalose and Proclin-300.

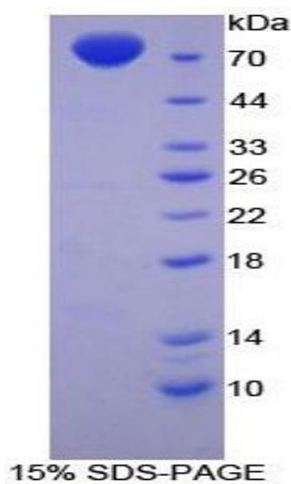
Preservative: Dithiothreitol (DTT), ProClin

Precaution of Use: This product contains ProClin and Dithiothreitol (DTT): POISONOUS AND HAZARDOUS SUBSTANCES which should be handled by trained staff only.

Storage: 4 °C, -80 °C

Storage Comment: Store at 2-8 °C for up to one month. Store at -80 °C for up to one year. Avoid repeated freeze/thaw cycles.

## Images



### SDS-PAGE

**Image 1.** SDS-PAGE analysis of Chicken MSE Protein.