

Datasheet for ABIN2967705

Phospholipase C gamma 1 Protein[Go to Product page](#)**1** Image

Overview

Quantity:	100 µg
Target:	Phospholipase C gamma 1 (PLCG1)
Origin:	Human
Source:	Escherichia coli (E. coli)
Protein Type:	Recombinant
Application:	Western Blotting (WB), SDS-PAGE (SDS), ELISA, Immunoprecipitation (IP)

Product Details

Characteristics:	Human Phospholipase C Gamma 1 (PLCg1) Protein
Purity:	> 95 %

Target Details

Target:	Phospholipase C gamma 1 (PLCG1)
Alternative Name:	Phospholipase C gamma 1 (PLCG1 Products)
Molecular Weight:	26.6 kDa
UniProt:	P19174
Pathways:	RTK Signaling , WNT Signaling , TCR Signaling , Fc-epsilon Receptor Signaling Pathway , EGFR Signaling Pathway , Neurotrophin Signaling Pathway , Thyroid Hormone Synthesis , Inositol Metabolic Process , Myometrial Relaxation and Contraction , Regulation of Muscle Cell Differentiation , Regulation of G-Protein Coupled Receptor Protein Signaling , Skeletal Muscle Fiber Development , G-protein mediated Events , Signaling Events mediated by VEGFR1 and

Target Details

VEGFR2, Interaction of EGFR with phospholipase C-gamma, VEGFR1 Specific Signals, VEGF Signaling

Application Details

Comment: Please note that the majority of this suppliers proteins are partial length rather than full length. We recommend customers to inquire.

Restrictions: For Research Use only

Handling

Format: Liquid

Concentration: 200 µg/mL

Buffer: Prior to lyophilization: PBS, pH 7.4, containing 0.01 % SKL, 1 mM DTT, 5 % Trehalose and Proclin-300.

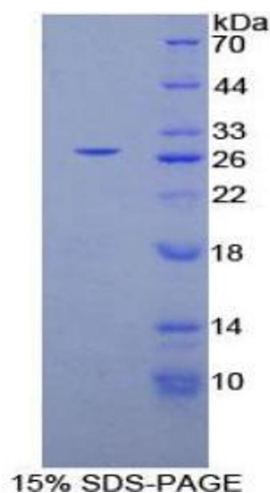
Preservative: Dithiothreitol (DTT), ProClin

Precaution of Use: This product contains ProClin and Dithiothreitol (DTT): POISONOUS AND HAZARDOUS SUBSTANCES which should be handled by trained staff only.

Storage: 4 °C, -80 °C

Storage Comment: Store at 2-8 °C for up to one month. Store at -80 °C for up to one year. Avoid repeated freeze/thaw cycles.

Images



SDS-PAGE

Image 1. SDS-PAGE analysis of Human PLCg1 Protein.