

Datasheet for ABIN2967723

**XRCC6 Protein****1** Image[Go to Product page](#)

## Overview

|               |  |
|---------------|--|
| Quantity:     | 100 µg   |
| Target:       | XRCC6  |
| Origin:       | Mouse  |
| Source:       | Escherichia coli (E. coli)   |
| Protein Type: | Recombinant  |
| Application:  | SDS-PAGE (SDS), Western Blotting (WB), ELISA, Immunoprecipitation (IP) |

## Product Details

|                  |  |
|------------------|--|
| Characteristics: | Mouse X-Ray Repair Cross Complementing 6 (XRCC6) Protein |
| Purity:          | > 95 %   |

## Target Details

|                   |   |
|-------------------|---|
| Target:           | XRCC6   |
| Alternative Name: | X-Ray Repair Cross Complementing 6 ( <a href="#">XRCC6 Products</a> ) |
| Pathways:         | <a href="#">DNA Damage Repair</a>                                     |

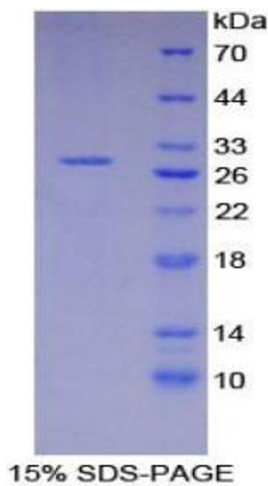
## Application Details

|               |  |
|---------------|--|
| Comment:      | Please note that the majority of this suppliers proteins are partial length rather than full length.<br>We recommend customers to inquire. |
| Restrictions: | For Research Use only  |

Handling

|                    |   |
|--------------------|---|
| Format:            | Liquid  |
| Concentration:     | 200 µg/mL   |
| Buffer:            | Prior to lyophilization: PBS, pH 7.4, containing 0.01 % SKL, 1 mM DTT, 5 % Trehalose and Proclin-300.                                     |
| Preservative:      | Dithiothreitol (DTT), ProClin   |
| Precaution of Use: | This product contains ProClin and Dithiothreitol (DTT): POISONOUS AND HAZARDOUS SUBSTANCES which should be handled by trained staff only. |
| Storage:           | 4 °C,-80 °C   |
| Storage Comment:   | Store at 2-8 °C for up to one month. Store at -80 °C for up to one year. Avoid repeated freeze/thaw cycles.                               |

Images



**SDS-PAGE**

**Image 1.** SDS-PAGE analysis of Mouse XRCC6 Protein.