

Datasheet for ABIN2970987  
**anti-LC3C antibody (pSer12)**[Go to Product page](#)

## 3 Images

## Overview

Quantity:	400 µL
Target:	LC3C (MAP1LC3C)
Binding Specificity:	pSer12
Reactivity:	Human
Host:	Rabbit
Clonality:	Polyclonal
Conjugate:	This LC3C antibody is un-conjugated
Application:	Western Blotting (WB), Dot Blot (DB)

## Product Details

Immunogen:	Human LC3C (phospho-Ser12).
Isotype:	IgG
Purification:	This antibody is first purified by protein A affinity chromatography. Then, the antibody fraction is peptide affinity purified in a 2-step procedure with peptides. The antibody is eluted with high and low pH buffers and neutralized immediately, followed by dialysis against PBS.

## Target Details

Target:	LC3C (MAP1LC3C)
Alternative Name:	LC3C ( <a href="#">MAP1LC3C Products</a> )
UniProt:	<a href="#">Q9H492</a>

## Target Details

Pathways: [Autophagy](#)

## Application Details

Application Notes: Optimal working dilution should be determined by the investigator.

Restrictions: For Research Use only

## Handling

Format: Liquid

Buffer: PBS with 0.09 % (W/V) sodium azide.

Preservative: Sodium azide

Precaution of Use: This product contains Sodium azide: a POISONOUS AND HAZARDOUS SUBSTANCE which should be handled by trained staff only.

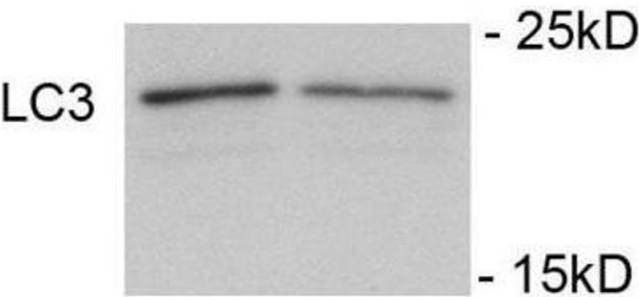
Storage: -20 °C

Storage Comment: Aliquot and store at -20 °C. Avoid repeated freeze/thaw cycles.

## Images

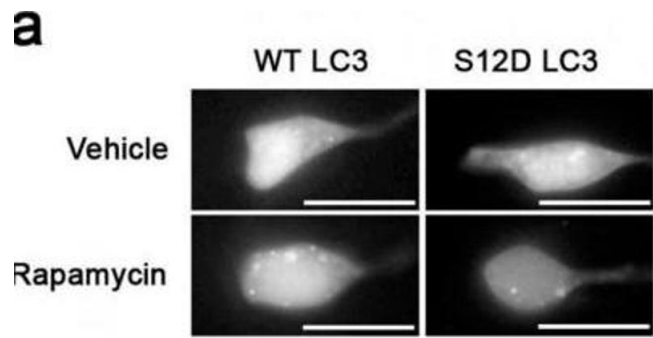
Western Blotting

Image 1.



Western Blotting

Image 2.



Western Blotting

Image 3.

