



[Go to Product page](#)

Datasheet for ABIN2971016  
**anti-MAP4K2 antibody**

2 Images

### Overview

Quantity:	400 µL
Target:	MAP4K2
Reactivity:	Human, Mouse
Host:	Rabbit
Clonality:	Polyclonal
Conjugate:	This MAP4K2 antibody is un-conjugated
Application:	Western Blotting (WB), Immunohistochemistry (IHC)

### Product Details

Immunogen:	Human Germinal Center Kinase.
Isotype:	IgG
Purification:	This antibody is purified through a protein G column, eluted with high and low pH buffers and neutralized immediately, followed by dialysis against PBS.

### Target Details

Target:	MAP4K2
Alternative Name:	Germinal Center Kinase ( <a href="#">MAP4K2 Products</a> )
UniProt:	<a href="#">Q12851</a>

## Application Details

Application Notes: Optimal working dilution should be determined by the investigator.

Restrictions: For Research Use only

## Handling

Format: Liquid

Buffer: PBS with 0.09 % (W/V) sodium azide.

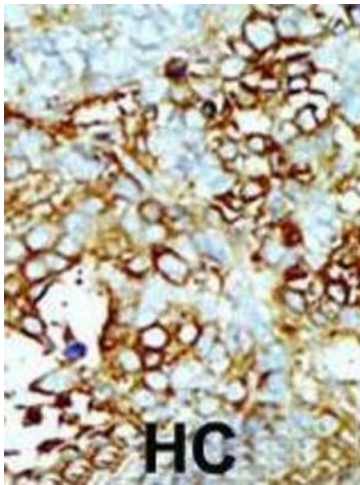
Preservative: Sodium azide

Precaution of Use: This product contains Sodium azide: a POISONOUS AND HAZARDOUS SUBSTANCE which should be handled by trained staff only.

Storage: -20 °C

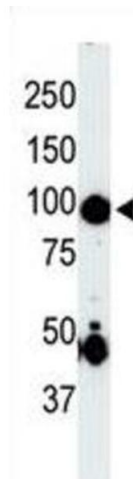
Storage Comment: Aliquot and store at -20 °C. Avoid repeated freeze/thaw cycles.

## Images



### Immunohistochemistry

Image 1.



### Western Blotting

Image 2.