

Datasheet for ABIN297247  
**anti-TLX1 antibody (AA 300-330, AA 306-318)**

## 2 Images

[Go to Product page](#)

## Overview

Quantity:	50 µg
Target:	TLX1
Binding Specificity:	AA 300-330, AA 306-318
Reactivity:	Mouse, Human, Rat, Cow, Dog, Rabbit, Bat, Monkey, Chicken, Horse, Hamster
Host:	Rabbit
Clonality:	Polyclonal
Conjugate:	This TLX1 antibody is un-conjugated
Application:	Western Blotting (WB), Immunohistochemistry (Paraffin-embedded Sections) (IHC (p)), Immunohistochemistry (IHC)

## Product Details

Brand:	IHC-plus™
Immunogen:	A peptide sequence corresponding to acids amino acids 306-318 (LQNLQPWSDDSTK) of human HOX11 was used as the immunogen, GenBank no CAA08834.1. Percent identity by BLAST analysis: Human, Gorilla, Gibbon, Monkey, Marmoset, Mouse, Rat, Hamster, Elephant, Panda, Bovine, Dog, Bat, Horse, Rabbit, Turkey, Chicken (100%), Opossum, Platypus, Xenopus (85%).
Isotype:	IgG
Specificity:	A portion of amino acids 300-330 of human HOX11 protein was used as the immunogen.
Predicted Reactivity:	Percent identity by BLAST analysis: Human, Gorilla, Gibbon, Monkey, Marmoset, Mouse, Rat, Hamster, Elephant, Panda, Bovine, Dog, Bat, Horse, Rabbit, Turkey, Chicken (100%) Opossum,

## Product Details

Platypus, Xenopus (85%).

Purification: Protein G purified

## Target Details

Target: TLX1

Alternative Name: TLX1 / HOX11 ([TLX1 Products](#))

Background: Name/Gene ID: TLX1

Synonyms: TLX1, Homeobox protein Hox-11, HOX11, T-cell leukemia homeobox 1, Proto-oncogene TCL-3, TCL3, T-cell leukemia, homeobox 1

Gene ID: 3195

UniProt: [P31314](#)

## Application Details

Application Notes: Approved: IHC, IHC-P (5 µg/mL), WB (1 - 3 µg/mL)

Usage: Immunohistochemistry: This antibody was validated for use in immunohistochemistry on a panel of 21 formalin-fixed, paraffin-embedded (FFPE) human tissues after heat induced antigen retrieval in pH 6.0 citrate buffer. After incubation with the primary antibody, slides were incubated with biotinylated secondary antibody, followed by alkaline phosphatase-streptavidin and chromogen. The stained slides were evaluated by a pathologist to confirm staining specificity. The optimal working concentration for this antibody was determined to be 5 µg/mL.

Comment: Target Species of Antibody: Human

Restrictions: For Research Use only

## Handling

Format: Liquid

Concentration: Lot specific

Buffer: PBS, 0.2 % gelatin, 0.05 % sodium azide.

Preservative: Sodium azide

Precaution of Use: This product contains Sodium azide: a POISONOUS AND HAZARDOUS SUBSTANCE which

## Handling

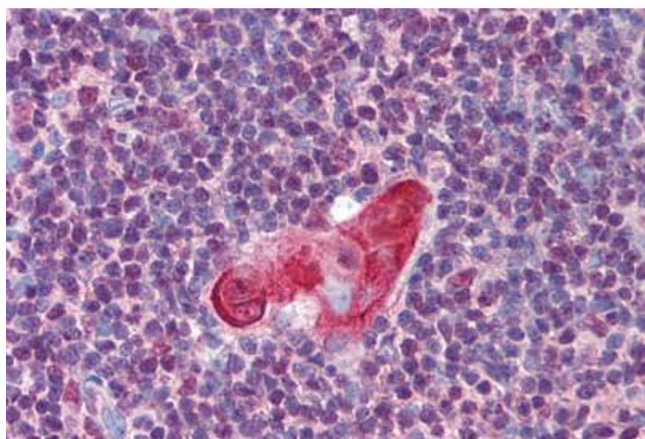
should be handled by trained staff only.

Handling Advice: avoid freeze thaw cycles.

Storage: 4 °C, -20 °C

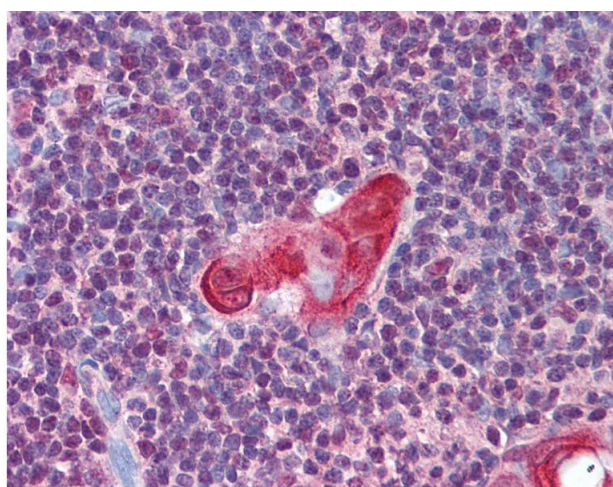
Storage Comment: Short term 4°C, long term aliquot and store at -20°C, avoid freeze-thaw cycles.

## Images



### Immunohistochemistry (Paraffin-embedded Sections)

**Image 1.** Human Thymus (formalin-fixed, paraffin-embedded) stained with TLX1 antibody ABIN297247 at 5 ug/ml followed by biotinylated goat anti-rabbit IgG secondary antibody ABIN481713, alkaline phosphatase-streptavidin and chromogen.



### Immunohistochemistry

**Image 2.** Anti-TLX1 antibody IHC of human thymus. Immunohistochemistry of formalin-fixed, paraffin-embedded tissue after heat-induced antigen retrieval. Antibody concentration 5 ug/ml.