

Datasheet for ABIN2974672

anti-PIWIL4 antibody**4** Images[Go to Product page](#)

Overview

Quantity:	200 µL
Target:	PIWIL4
Reactivity:	Human, Mouse, Rat
Host:	Rabbit
Clonality:	Polyclonal
Conjugate:	This PIWIL4 antibody is un-conjugated
Application:	Western Blotting (WB), Immunohistochemistry (IHC), Immunofluorescence (fixed cells) (IF/ICC)

Product Details

Immunogen:	Recombinant fusion protein of human PIWIL4.
Isotype:	IgG
Purification:	Affinity purified

Target Details

Target:	PIWIL4
Alternative Name:	PIWIL4 (PIWIL4 Products)
Molecular Weight:	Calculated MW: 52 kDa/56 kDa/96 kDa Observed MW: 110 kDa
Gene ID:	143689
UniProt:	Q7Z3Z4

Application Details

Application Notes: Optimal working dilution should be determined by the investigator.

Restrictions: For Research Use only

Handling

Format: Liquid

Concentration: Lot specific

Buffer: PBS, pH 7.3, 0.02 % sodium azide, 50 % glycerol.

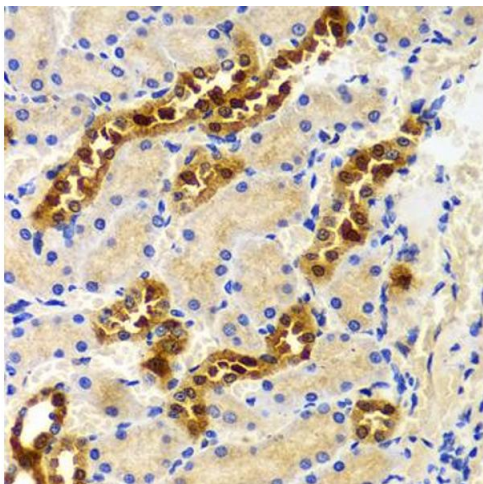
Preservative: Sodium azide

Precaution of Use: This product contains Sodium azide: a POISONOUS AND HAZARDOUS SUBSTANCE which should be handled by trained staff only.

Storage: -20 °C

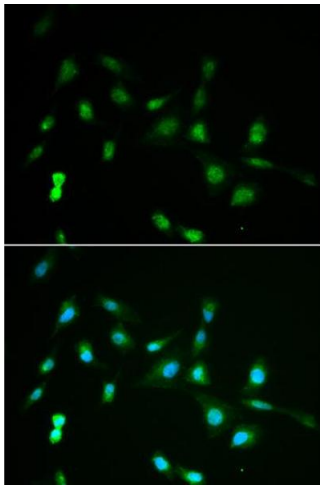
Storage Comment: Aliquot and store at -20 °C. Avoid repeated freeze/thaw cycles.

Images



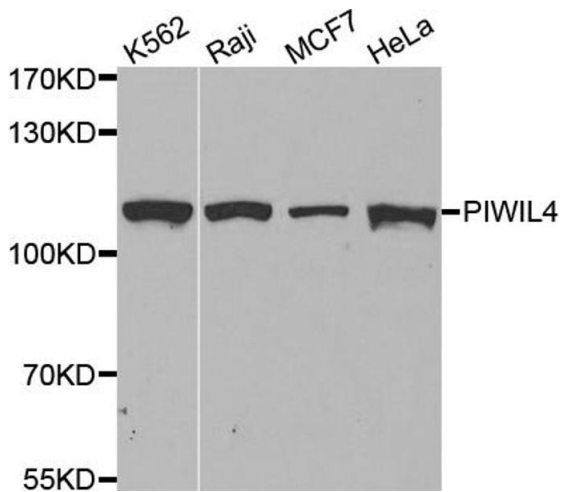
Immunohistochemistry (Paraffin-embedded Sections)

Image 1. Immunohistochemistry of paraffin-embedded rat kidney using PIWIL4 antibody (ABIN5971612) at dilution of 1/100 (40x lens).



Immunofluorescence

Image 2. Immunofluorescence analysis of A549 cells using PIWIL4 antibody (ABIN5971612). Blue: DAPI for nuclear staining.



Western Blotting

Image 3. Western blot analysis of extracts of various cell lines, using PIWIL4 antibody (ABIN5971612) at 1/500 dilution.

Please check the [product details page](#) for more images. Overall 4 images are available for ABIN2974672.