

Datasheet for ABIN297633  
**anti-SIK2 antibody (AA 100-150)**

## 2 Images

[Go to Product page](#)

## Overview

Quantity:	50 µg
Target:	SIK2
Binding Specificity:	AA 100-150
Reactivity:	Human, Mouse, Rat, Cow, Dog
Host:	Rabbit
Clonality:	Polyclonal
Conjugate:	This SIK2 antibody is un-conjugated
Application:	Western Blotting (WB), Immunohistochemistry (IHC), Immunohistochemistry (Paraffin-embedded Sections) (IHC (p))

## Product Details

Brand:	IHC-plus™
Immunogen:	A portion of amino acids 100-150 of human SIK2.  Type of Immunogen: Protein fragment
Specificity:	Human SIK2 is a 926 amino acid protein. The approximately 120 kD band is higher than the theoretical expected size, but this band, as well as the approximately 25 kD lower band, are blocked by immunizing peptide.
Purification:	Protein G purified

## Target Details

Target:	SIK2
Alternative Name:	SIK2 / SNF1LK2 ( <a href="#">SIK2 Products</a> )
Background:	Name/Gene ID: SIK2 Subfamily: CAMKL Family: Protein Kinase  Synonyms: SIK2, KIAA0781, LOH11CR1I, SNF1LK2, QIK, Qin-induced kinase, Salt-inducible kinase 2, SIK-2, SNF1-like kinase 2
Gene ID:	23235
UniProt:	<a href="#">Q9H0K1</a>

## Application Details

Application Notes:	Approved: IHC, IHC-P (10 µg/mL), WB (1 - 3 µg/mL)  Usage: Immunohistochemistry: This antibody was validated for use in immunohistochemistry on a panel of 21 formalin-fixed, paraffin-embedded (FFPE) human tissues after heat induced antigen retrieval in pH 6.0 citrate buffer. After incubation with the primary antibody, slides were incubated with biotinylated secondary antibody, followed by alkaline phosphatase-streptavidin and chromogen. The stained slides were evaluated by a pathologist to confirm staining specificity. The optimal working concentration for this antibody was determined to be 10 µg/mL.
Comment:	Target Species of Antibody: Human
Restrictions:	For Research Use only

## Handling

Format:	Liquid
Concentration:	Lot specific
Buffer:	PBS, 0.05 % BSA, 0.05 % sodium azide
Preservative:	Sodium azide
Precaution of Use:	This product contains Sodium azide: a POISONOUS AND HAZARDOUS SUBSTANCE which should be handled by trained staff only.

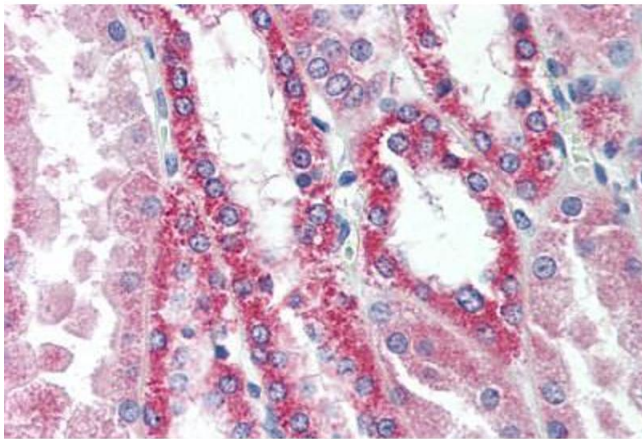
## Handling

Handling Advice: avoid freeze thaw cycles.

Storage: 4 °C, -20 °C

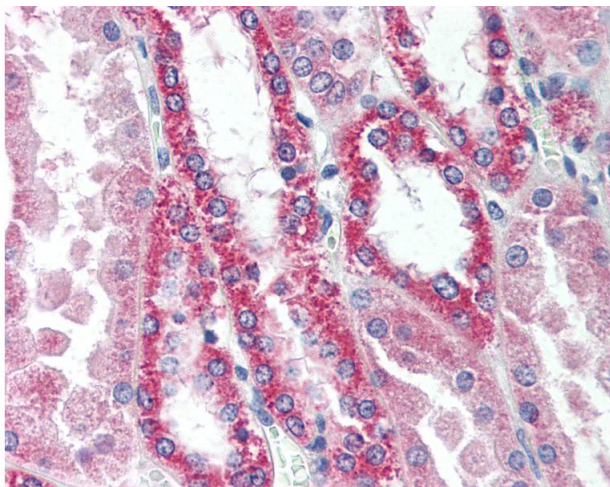
Storage Comment: Short term 4°C, long term aliquot and store at -20°C, avoid freeze-thaw cycles.

## Images



### Immunohistochemistry (Paraffin-embedded Sections)

**Image 1.** Human Kidney (formalin-fixed, paraffin-embedded) stained with SNF1LK2 antibody ABIN297633 at 10 ug/ml followed by biotinylated goat anti-rabbit IgG secondary antibody ABIN481713, alkaline phosphatase-streptavidin and chromogen.



### Immunohistochemistry

**Image 2.** Anti-SIK2 / SNF1LK2 antibody IHC of human kidney. Immunohistochemistry of formalin-fixed, paraffin-embedded tissue after heat-induced antigen retrieval. Antibody concentration 10 ug/ml.