

Datasheet for ABIN297655  
**anti-SIRT7 antibody (AA 35-51, AA 361-377)**[Go to Product page](#)

## 2 Images

## Overview

Quantity:	50 µg
Target:	SIRT7
Binding Specificity:	AA 35-51, AA 361-377
Reactivity:	Human
Host:	Rabbit
Clonality:	Polyclonal
Conjugate:	This SIRT7 antibody is un-conjugated
Application:	Western Blotting (WB), Immunohistochemistry (IHC), Immunohistochemistry (Paraffin-embedded Sections) (IHC (p))

## Product Details

Brand:	IHC-plus™
Immunogen:	A mixture of synthetic peptides corresponding to amino acids 35-51 and 361-377 of human SIRT7.  Type of Immunogen: Synthetic peptide
Isotype:	IgG
Specificity:	There is no corresponding 40 kD band seen in mouse or rat liver cell lysate.
Purification:	Protein G purified

## Target Details

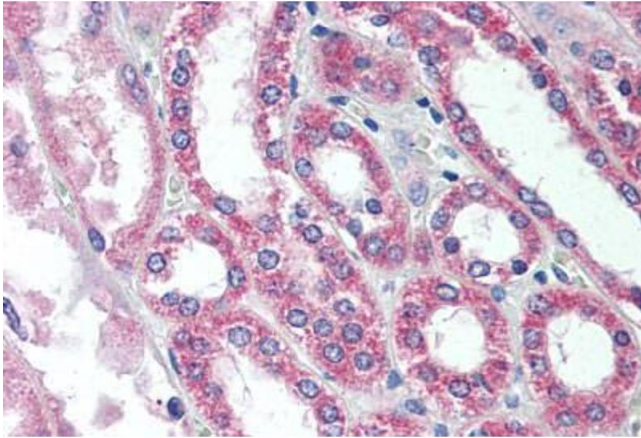
Target:	SIRT7
Alternative Name:	SIRT7 / Sirtuin 7 ( <a href="#">SIRT7 Products</a> )
Background:	Name/Gene ID: SIRT7  Synonyms: SIRT7, SIR2L7, Sirtuin type 7, SIR2-like protein 7, Sir2-related protein type 7, Sirtuin 7
Gene ID:	51547
UniProt:	<a href="#">Q9NRC8</a>

## Application Details

Application Notes:	Approved: IHC, IHC-P (5 µg/mL), WB (1 - 3 µg/mL)  Usage: Immunohistochemistry: This antibody was validated for use in immunohistochemistry on a panel of 21 formalin-fixed, paraffin-embedded (FFPE) human tissues after heat induced antigen retrieval in pH 6.0 citrate buffer. After incubation with the primary antibody, slides were incubated with biotinylated secondary antibody, followed by alkaline phosphatase-streptavidin and chromogen. The stained slides were evaluated by a pathologist to confirm staining specificity. The optimal working concentration for this antibody was determined to be 5 µg/mL.
Comment:	Target Species of Antibody: Human
Restrictions:	For Research Use only

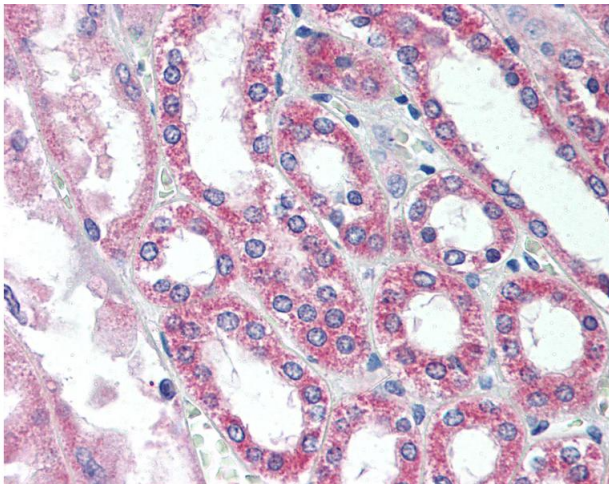
## Handling

Format:	Liquid
Concentration:	Lot specific
Buffer:	PBS, 0.05 % sodium azide.
Preservative:	Sodium azide
Precaution of Use:	This product contains Sodium azide: a POISONOUS AND HAZARDOUS SUBSTANCE which should be handled by trained staff only.
Handling Advice:	Avoid repeat freeze-thaw cycles.
Storage:	4 °C, -20 °C
Storage Comment:	Short term: 4°C. Long term: Store at -20°C. Avoid freeze-thaw cycles.



#### Immunohistochemistry (Paraffin-embedded Sections)

**Image 1.** Human Kidney (formalin-fixed, paraffin-embedded) stained with SIRT7 antibody ABIN297655 at 5 ug/ml followed by biotinylated goat anti-rabbit IgG secondary antibody ABIN481713, alkaline phosphatase-streptavidin and chromogen.



#### Immunohistochemistry

**Image 2.** Anti-SIRT7 antibody IHC of human kidney. Immunohistochemistry of formalin-fixed, paraffin-embedded tissue after heat-induced antigen retrieval. Antibody concentration 5 ug/ml.