

Datasheet for ABIN297746
anti-GRK5 antibody (Internal Region)

2 Images

[Go to Product page](#)

Overview

Quantity:	50 µg
Target:	GRK5
Binding Specificity:	Internal Region
Reactivity:	Human, Mouse, Rat, Cow, Horse, Chicken, Pig, Monkey, Bat
Host:	Rabbit
Clonality:	Polyclonal
Conjugate:	This GRK5 antibody is un-conjugated
Application:	Immunohistochemistry (IHC), Immunohistochemistry (Paraffin-embedded Sections) (IHC (p))

Product Details

Brand:	IHC-plus™
Immunogen:	Synthetic 15 amino acid peptide from internal region of human GRK5. Percent identity with other species by BLAST analysis: Human, Gibbon, Monkey, Marmoset, Mouse, Rat, Bat, Bovine, Panda, Horse, Pig, Opossum, Turkey, Chicken, Platypus (100%), Orangutan, Dog, Elephant, Xenopus (93%). Type of Immunogen: Synthetic peptide
Specificity:	Human GRK5. BLAST analysis of the peptide immunogen showed no homology with other human proteins.
Predicted Reactivity:	Percent identity with other species by BLAST analysis: Human, Gibbon, Monkey, Marmoset, Mouse, Rat, Bat, Bovine, Panda, Horse, Pig, Opossum, Turkey, Chicken, Platypus (100%)

Product Details

Orangutan, Dog, Elephant, Xenopus (93%).

Purification: Immunoaffinity purified

Target Details

Target: GRK5

Alternative Name: GRK5 ([GRK5 Products](#))

Background: Name/Gene ID: GRK5
Subfamily: GPRK
Family: Protein Kinase

Synonyms: GRK5, FP2025, GPRK5

Gene ID: 2869

Pathways: [Myometrial Relaxation and Contraction](#), [Regulation of G-Protein Coupled Receptor Protein Signaling](#)

Application Details

Application Notes: Approved: IHC, IHC-P (7 µg/mL)

Usage: Immunohistochemistry: This antibody was validated for use in immunohistochemistry on a panel of 21 formalin-fixed, paraffin-embedded (FFPE) human tissues after heat induced antigen retrieval in pH 6.0 citrate buffer. After incubation with the primary antibody, slides were incubated with biotinylated secondary antibody, followed by alkaline phosphatase-streptavidin and chromogen. The stained slides were evaluated by a pathologist to confirm staining specificity. The optimal working concentration for this antibody was determined to be 7 µg/mL.

Comment: Target Species of Antibody: Human

Restrictions: For Research Use only

Handling

Format: Liquid

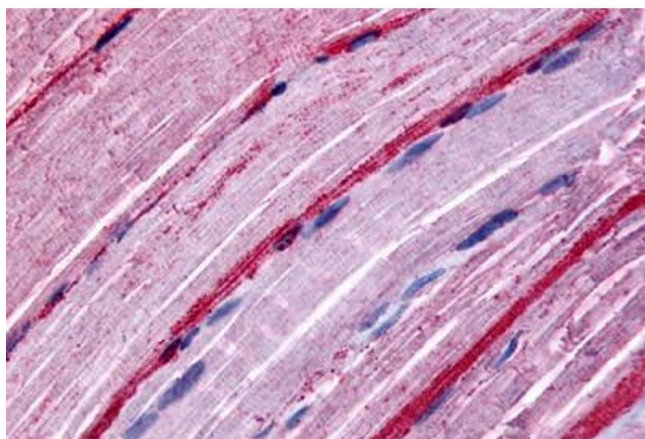
Concentration: Lot specific

Buffer: PBS, less than 0.1 % sodium azide.

Handling

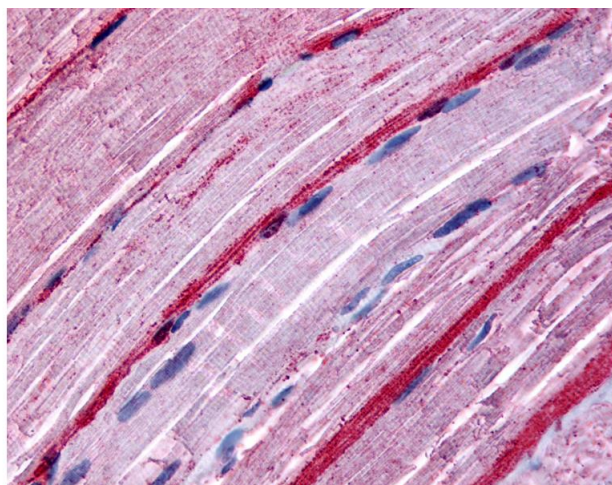
Preservative:	Sodium azide
Precaution of Use:	This product contains Sodium azide: a POISONOUS AND HAZARDOUS SUBSTANCE which should be handled by trained staff only.
Storage:	4 °C,-20 °C
Storage Comment:	Aliquot and store undiluted at -20°C or below for up to 1 year. Can be stored undiluted at 4°C for up to 1 month. Avoid freeze-thaw cycles.
Expiry Date:	12 months

Images



Immunohistochemistry (Formalin-fixed Paraffin-embedded Sections)

Image 1. Myocytes, Human: Formalin-Fixed Paraffin-Embedded (FFPE)



Immunohistochemistry

Image 2. Anti-GRK5 antibody IHC of human skeletal muscle. Immunohistochemistry of formalin-fixed, paraffin-embedded tissue after heat-induced antigen retrieval.