

Datasheet for ABIN2982659
anti-COL18A1 antibody (Center)



[Go to Product page](#)

3 Images

Overview

Quantity:	100 µL
Target:	COL18A1
Binding Specificity:	Center
Reactivity:	Human, Cow, Chicken
Host:	Rabbit
Clonality:	Polyclonal
Conjugate:	This COL18A1 antibody is un-conjugated
Application:	Western Blotting (WB), Immunohistochemistry (IHC), Immunofluorescence (fixed cells) (IF/ICC)

Product Details

Immunogen:	KLH-conjugated synthetic peptide encompassing a sequence within the center region of human Collagen 18 alpha 1. The exact sequence is proprietary.
Specificity:	Recognizes endogenous levels of Collagen 18 alpha 1 protein.
Purification:	The antibody was purified by immunogen affinity chromatography

Target Details

Target:	COL18A1
Alternative Name:	Collagen 18 alpha 1 (COL18A1 Products)
Gene ID:	80781

Application Details

Application Notes: Optimal working dilution should be determined by the investigator.

Restrictions: For Research Use only

Handling

Format: Liquid

Buffer: Liquid in 0.42 % Potassium phosphate, 0.87 % Sodium chloride, pH 7.3, 30 % glycerol, and 0.01 % sodium azide.

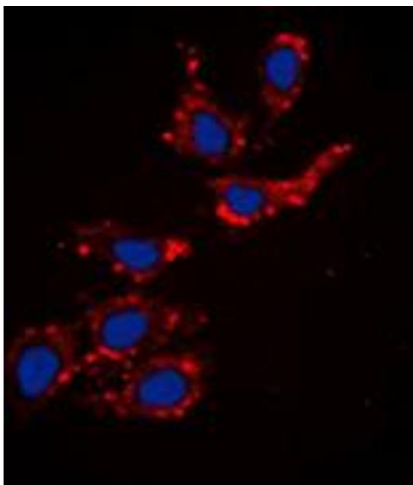
Preservative: Sodium azide

Precaution of Use: This product contains Sodium azide: a POISONOUS AND HAZARDOUS SUBSTANCE which should be handled by trained staff only.

Storage: -20 °C

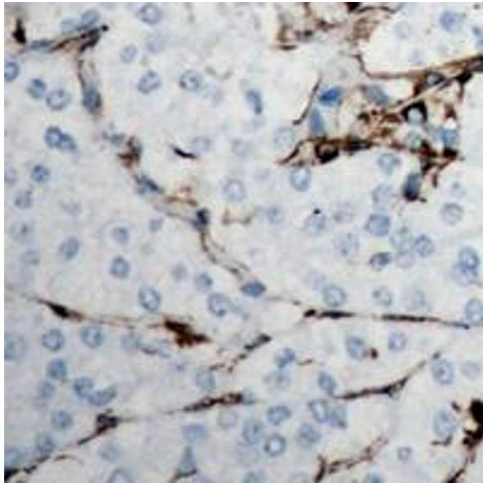
Storage Comment: Aliquot and store at -20°C for one year. Avoid repeated freeze/thaw cycles.

Images



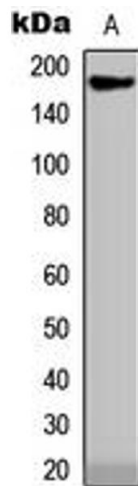
Immunofluorescence

Image 1.



Immunohistochemistry

Image 2.



Western Blotting

Image 3.