

Datasheet for ABIN2987799

**anti-MAPK8/9/10 antibody (pThr183, pThr221, pTyr185)**[Go to Product page](#)**1** Image

## Overview

Quantity:	100 µL
Target:	MAPK8/9/10
Binding Specificity:	pThr183, pThr221, pTyr185
Reactivity:	Human, Rat, Mouse
Host:	Rabbit
Clonality:	Polyclonal
Conjugate:	This MAPK8/9/10 antibody is un-conjugated
Application:	Western Blotting (WB), Immunofluorescence (fixed cells) (IF/ICC)

## Product Details

Immunogen:	Synthetic Peptide. A phospho specific peptide corresponding to residues surrounding T183/Y185 of human MAPK8/MAPK9/MAPK10.
Isotype:	IgG
Purification:	Affinity purified

## Target Details

Target:	MAPK8/9/10
Alternative Name:	MAPK8/9/10 ( <a href="#">MAPK8/9/10 Products</a> )
Molecular Weight:	Calculated MW: 35 kDa/44 kDa/48 kDa/27 kDa/52 kDa Observed MW: 46 kDa, 54 kDa

## Target Details

UniProt: [P45983](#), [P45984](#), [P53779](#)

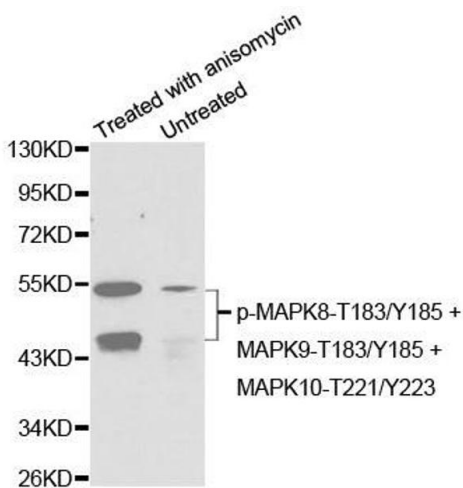
## Application Details

Application Notes:	Optimal working dilution should be determined by the investigator.
Restrictions:	For Research Use only

## Handling

Format:	Liquid
Concentration:	Lot specific
Buffer:	PBS, pH 7.3, 0.02 % sodium azide, 50 % glycerol.
Preservative:	Sodium azide
Precaution of Use:	This product contains Sodium azide: a POISONOUS AND HAZARDOUS SUBSTANCE which should be handled by trained staff only.
Storage:	-20 °C
Storage Comment:	Aliquot and store at -20 °C. Avoid repeated freeze/thaw cycles.

## Images



### Western Blotting

**Image 1.** Western blot analysis of extracts from C6 cells untreated or treated with anisomycin using Phospho-MAPK8-T183/Y185 + MAPK9-T183/Y185 + MAPK10-T221/Y223 Antibody (ABIN2987800).