

Datasheet for ABIN2996098
anti-MLL/KMT2A antibody[Go to Product page](#)

2 Images

Overview

Quantity:	400 µL
Target:	MLL/KMT2A (MLL)
Reactivity:	Human
Host:	Rabbit
Clonality:	Polyclonal
Conjugate:	This MLL/KMT2A antibody is un-conjugated
Application:	Immunohistochemistry (IHC), Flow Cytometry (FACS)

Product Details

Immunogen:	Human HRX.
Isotype:	IgG
Purification:	This antibody is purified through a protein G column, eluted with high and low pH buffers and neutralized immediately, followed by dialysis against PBS.

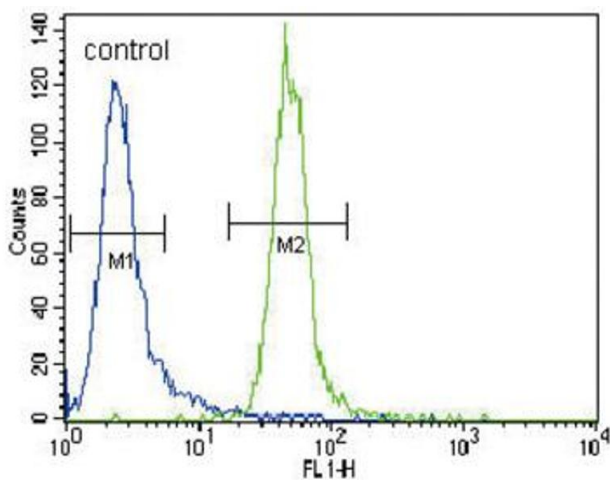
Target Details

Target:	MLL/KMT2A (MLL)
Alternative Name:	HRX (MLL Products)
UniProt:	Q03164
Pathways:	Warburg Effect

Application Details

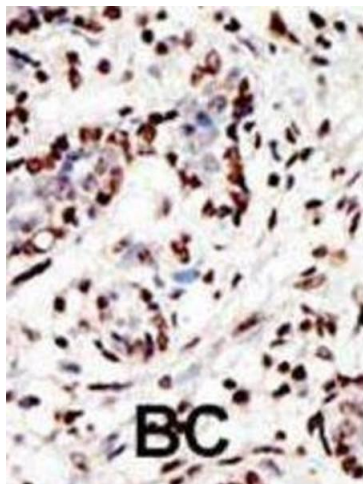
Application Notes:	Optimal working dilution should be determined by the investigator.
Restrictions:	For Research Use only
Handling	
Format:	Liquid
Buffer:	PBS with 0.09 % (W/V) sodium azide.
Preservative:	Sodium azide
Precaution of Use:	This product contains Sodium azide: a POISONOUS AND HAZARDOUS SUBSTANCE which should be handled by trained staff only.
Storage:	-20 °C
Storage Comment:	Aliquot and store at -20 °C. Avoid repeated freeze/thaw cycles.

Images



Flow Cytometry

Image 1.



Immunohistochemistry

Image 2.