

Datasheet for ABIN300042

anti-Acetylated Lysine antibody

2 Images



[Go to Product page](#)

Overview

Quantity:	100 µg
Target:	Acetylated Lysine
Reactivity:	Please inquire
Host:	Mouse
Clonality:	Monoclonal
Conjugate:	This Acetylated Lysine antibody is un-conjugated
Application:	Western Blotting (WB)

Product Details

Immunogen:	Type of Immunogen: Native protein
Clone:	15G10
Isotype:	IgG2b
Specificity:	Acetylated protein mixture
Purification:	Affinity purified

Target Details

Target:	Acetylated Lysine
Alternative Name:	Acetyl-Lysine (Acetylated Lysine Products)

Target Details

Target Type: Chemical

Application Details

Application Notes: Optimal working dilution should be determined by the investigator.

Restrictions: For Research Use only

Handling

Format: Liquid

Concentration: Lot specific

Buffer: Phosphate-buffered solution, pH 7.2, 0.09 % sodium azide.

Preservative: Sodium azide

Precaution of Use: This product contains Sodium azide: a POISONOUS AND HAZARDOUS SUBSTANCE which should be handled by trained staff only.

Storage: 4 °C, -20 °C

Storage Comment: 4°C or -20°C, Avoid freeze-thaw cycles.

Images

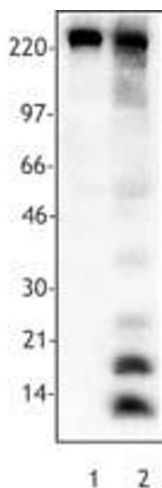


Image 1.

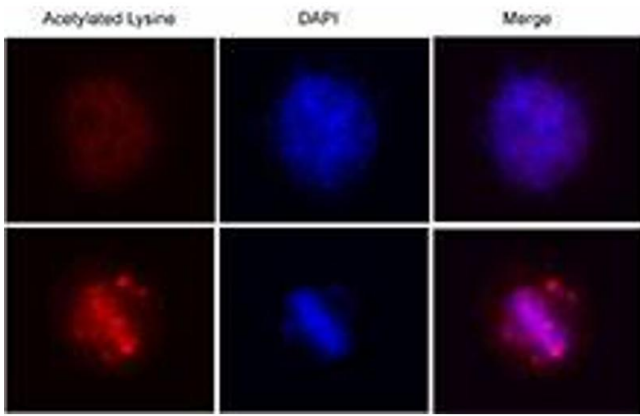


Image 2.