



Datasheet for ABIN3000477
anti-CEP170P1 antibody (AA 140-167)



[Go to Product page](#)

1 Image

Overview

Quantity:	400 µL
Target:	CEP170P1
Binding Specificity:	AA 140-167
Reactivity:	Human
Host:	Rabbit
Clonality:	Polyclonal
Conjugate:	This CEP170P1 antibody is un-conjugated
Application:	Western Blotting (WB)

Product Details

Immunogen:	140-167 aa.
Isotype:	IgG
Purification:	This antibody is purified through a protein A column, followed by peptide affinity purification.

Target Details

Target:	CEP170P1
Alternative Name:	CEP170L (CEP170P1 Products)
Molecular Weight:	32.64 kDa
UniProt:	Q96L14

Application Details

Application Notes: Optimal working dilution should be determined by the investigator.

Restrictions: For Research Use only

Handling

Format: Liquid

Buffer: PBS with 0.09 % (W/V) sodium azide.

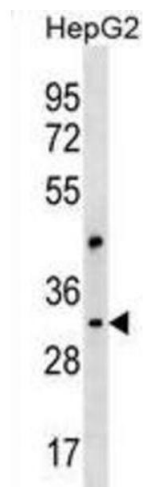
Preservative: Sodium azide

Precaution of Use: This product contains Sodium azide: a POISONOUS AND HAZARDOUS SUBSTANCE which should be handled by trained staff only.

Storage: -20 °C

Storage Comment: Aliquot and store at -20 °C. Avoid repeated freeze/thaw cycles.

Images



Western Blotting

Image 1.